

ENG



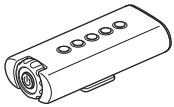
Manual

TL-LD180K

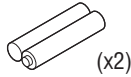
TIGHT KINETIC™

Before using the light, read this manual thoroughly and keep it for future reference.

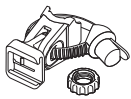
Design Pat. Pending
Copyright© 2020 CATEYE Co., Ltd.
TLLD180K-200710 1



Light unit



AAA alkaline batteries (x2)



FlexTight™ bracket (SP-11)

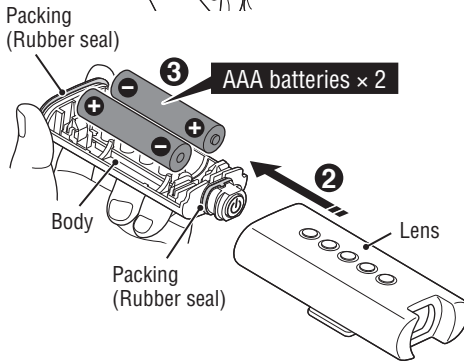
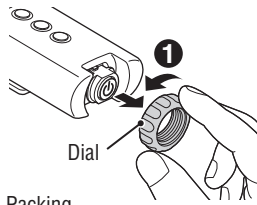
⚠ WARNING!!!

To prevent accidents and to ensure safe riding, make sure the light is securely attached to the bracket and it is functioning properly before the ride.

⚠ CAUTION!

- This light detects deceleration through the use of acceleration sensor. Please note that activation of the Kinetic function depends on the degree of deceleration, the light may not react or the reaction may be delayed.
- Stop your bicycle to operate the switch.
- This device is rated IPX7 based on JIS C0920. Do not use the product while immersed in water. Doing so may cause a malfunction. Wipe off any moisture after use.
- If the light unit or parts become dirty with mud, etc., clean with a soft cloth which is moistened with mild soap. Never apply paint thinner, benzene or alcohol; damage will result.

1 HOW TO INSTALL BATTERY

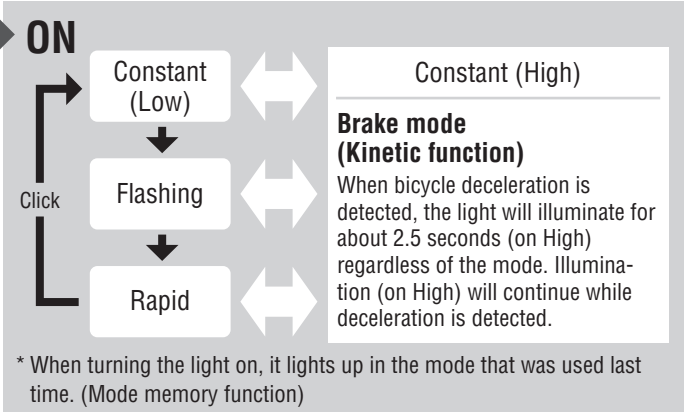
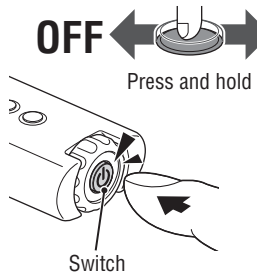


1. Rotate the dial and pull out the body from the lens as shown. ① ②
* Be sure to securely hold the unit while operating. If dropped accidentally, unexpected damage may occur.
2. Insert the batteries according to the orientation marked on the body. ③
3. Reattach the lens in the reverse order.

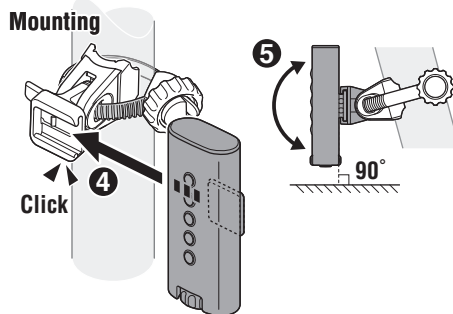
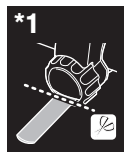
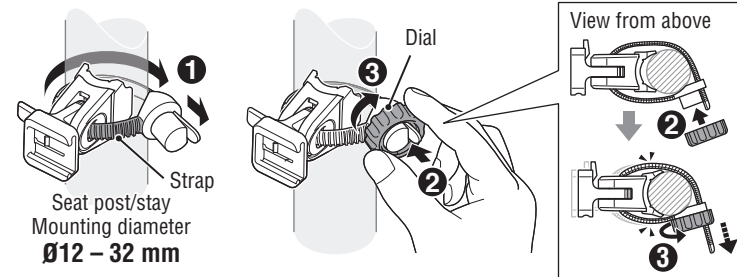
CAUTION!

- Do not use in combination with new and old batteries, or different types of batteries.
- Be sure to install batteries in the correct direction.
- To ensure waterproof performance, align the packing (rubber seal) with the groove on the body and securely attach the lens, then tighten the dial so that it is not loose.
- Remove and store batteries when you will not use the light for a long period of time. Otherwise, batteries may leak liquid, which may result in failure.

2 SWITCH OPERATION



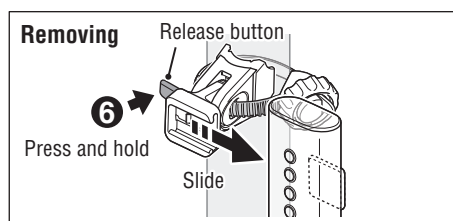
3 HOW TO MOUNT



1. Mount the bracket on the seat post or the seat stay as shown. ① to ③
2. Install the light unit on the bracket until a click is heard ④, then loosen the dial and adjust the lighting angle so that the light unit is perpendicular to the ground. ⑤
3. To remove the light unit, slide the light while pressing the release button. ⑥

CAUTION!

- Be sure to tighten the dial by hand. If tightened too hard with a tool, the screw thread may be stripped.
- Check the bracket periodically to ensure that it is securely attached and never use the light when loose.
- Round off the cut edge of the bracket strap to prevent injury. (*1)



SPARE/OPTIONAL PARTS

SPARE PARTS

5342280

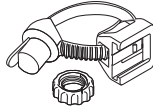
FlexTight™ bracket
SP-11



OPTIONAL PARTS

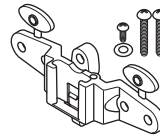
5342410

FlexTight™ bracket
SP-12-R



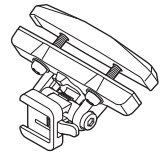
5445620

Rear rack bracket



5446510

RM-1 bracket



SPECIFICATIONS

Battery : AAA batteries (×2)

Operating time (When using alkaline batteries)

Constant (Low) : Approx. 70 hours Approx. 55 hours(*1)

Flashing : Approx. 160 hours Approx. 65 hours(*1)

Rapid : Approx. 140 hours Approx. 60 hours(*1)

*1: Approximate time based on 60 brake mode operations in 1 hour

Temperature range : 14°F – 104°F (-10°C – 40°C)

Dimensions/weight : 1-27/64" x 3-3/64" x 29/32" (36 x 77.5 x 23 mm)
/ 1.73 oz (49 g) (Including batteries)

* The specifications and design are subject to change without notice.

LIMITED WARRANTY

2-year Warranty: Light unit only

CatEye products are warranted to be free of defects from materials and workmanship for a period of 2 years from original purchase. If the product fails to work during normal use, CatEye will repair or replace the defect at no charge. Service must be performed by CatEye or an authorized retailer. To return the product, pack it carefully and enclose the warranty certificate (proof of purchase) with instruction for repair. Please write or type your name and address clearly on the warranty certificate. Insurance, handling and transportation charges to CatEye shall be borne by person desiring service. For UK and REPUBLIC OF IRELAND consumers, please return to the place of purchase. This does not affect your statutory rights.