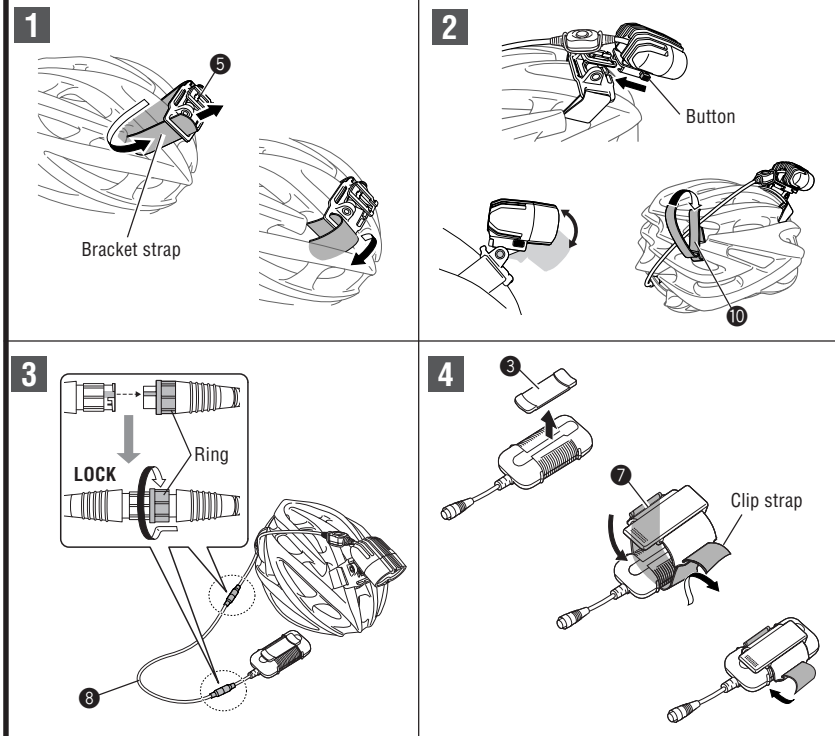


INTRODUCTION

! Before using the light, be sure to thoroughly read this instruction manual and accompanying "Lithium-ion Batteries".

This product combines high-power LEDs, Cateye Opticube lens technology, and compact lithium ion battery to produce a super bright, extremely durable high-performance light. Mounts on both helmet and handlebar.

MOUNTING THE LIGHT UNIT ON A HELMET



1 Installing Bracket

Attach the helmet mount to the helmet.

1. Securely fasten the helmet mount to the front part of the helmet, wrapping the velcro strap through the air vents on the helmet.

2 Attaching/removing the Light unit

1. Mount the light unit onto the helmet mount.
2. Secure the cable on the rear of the helmet using the spare cable strap.
Put on the helmet and adjust the angle of the beam. To remove the light unit, pull the light unit forward while pressing the button on the base of the light unit.
CAUTION! Make sure the light unit is cool to the touch before removing it.

3 Connecting the extension cord

Connect the extension cable.

1. Connect the extension cable between the light unit and the battery unit as shown in the figure.

CAUTION! Slide the ring of the plug forward and turn it to lock the plug. It must remain locked when in use.

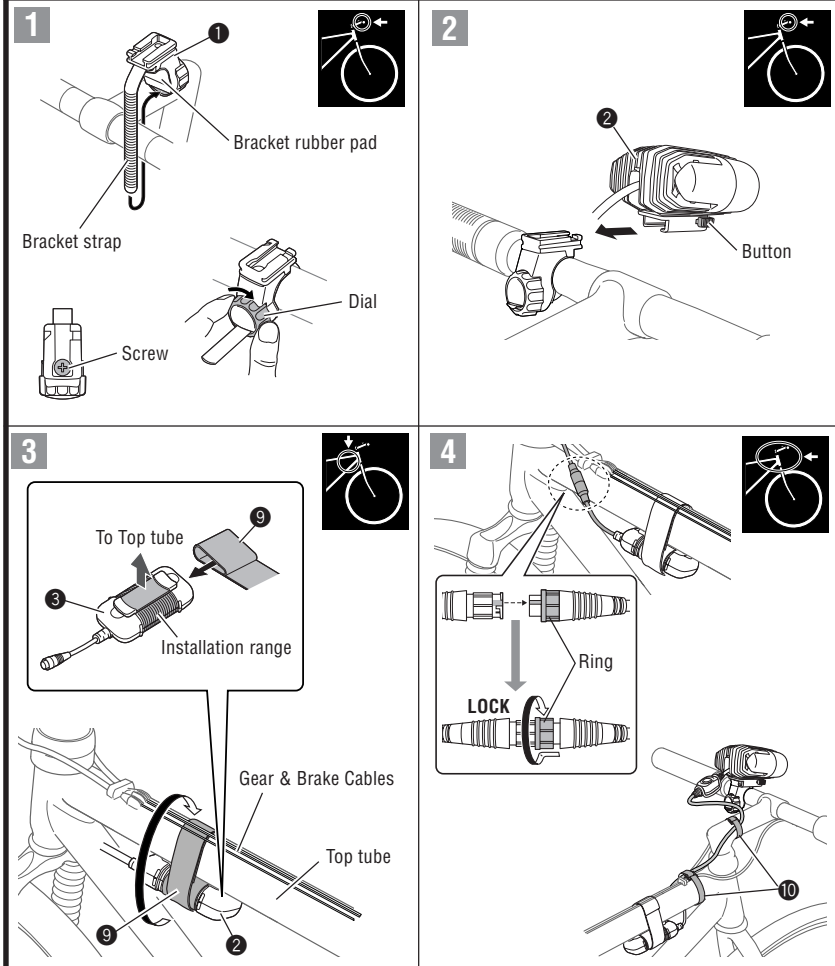
4 Installing Battery unit

When putting the battery unit in the strap or the pocket, attach the battery clip to the battery unit.

1. Remove the battery rubber pad of the battery unit.
2. Secure the battery unit with the clip strap.
NOTE: Secure the clip belt by wrapping it around the center of the batteries.
3. Secure the clip by tucking it in the pocket or the bag.

CAUTION! Arrange the cable so that it does not interfere with riding. Do not bend the cable strongly because the wire inside the cable may break.

HOW TO MOUNT TO A BICYCLE



1 Installing Bracket

Attach the bracket to the handlebar.

1. Wrap the bracket strap around the handlebar, and put it in the dial.
2. Securely tighten the strap by turning the dial.

CAUTION! • Make sure to tighten the dial by hand. If you tighten it too hard with a tool, the screw threads may be stripped.
• When the angle adjustment on the right and left sides is loose, tighten the screw.

3. Cut off the excess bracket strap extending from the dial.

CAUTION! Round off the cut edge of the bracket strap to prevent injury.

2 Attaching/removing the Light unit

1. Slide the light unit into the bracket as shown.
To remove unit after use, pull it out while pressing the button on the bracket.
CAUTION! Make sure the light unit is cool to the touch before removing it.

3 Installing Battery unit

Mount the battery unit onto the bicycle frame as shown.

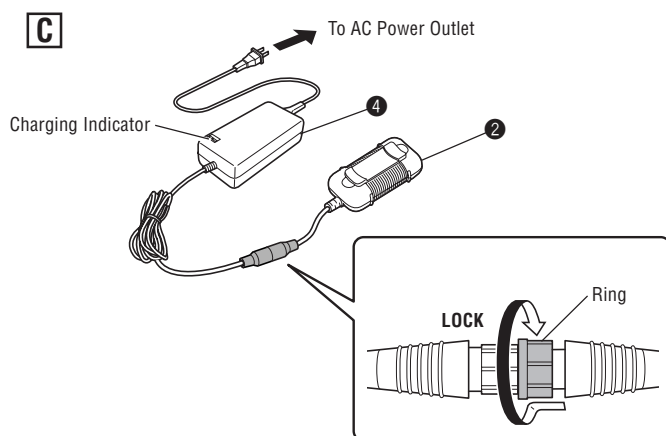
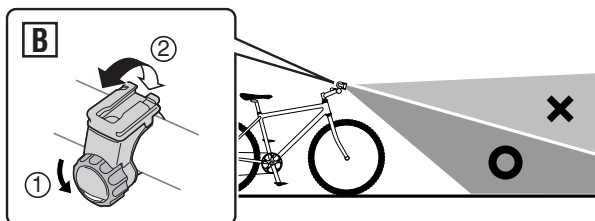
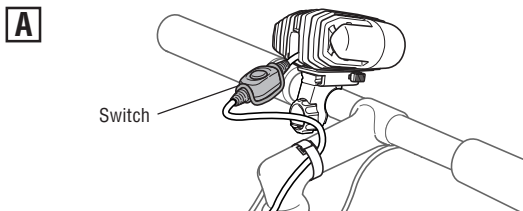
1. Put the battery unit through the loop of the fixing strap.
CAUTION! Check that the position of the fixing strap is within the installation range of the battery rubber pad of the battery unit.
2. Secure the battery unit by wrapping the fixing strap around the top tube so that the battery rubber pad comes into contact with the frame.
CAUTION! Do not wrap the fixing strap from above the cables. Doing so is dangerous because it may interfere with braking and gear shifting.

4 Connecting and Securing cables

Connect the light unit with the battery as shown.

1. Connect the plug of the light unit to the battery unit as shown in the figure.
CAUTION! Slide the plug ring forward and then turn it to lock. Make sure that the ring is locked before use.
2. Fix the cables to your frame and/or stem to keep them secured.
CAUTION! • Pay attention to the arrangement of the cable so that it does not interfere with the handling of the bicycle. Do not secure the cable at an acute angle because the wire inside the cable may break.
• Adjust the beam angle according to "How to Adjust the Beam Angle" in this manual.

HOW TO USE



A Switching on/off

Use the switch to switch between Hi and Low beams.

NOTE: The switch becomes hot while using the light unit. This is normal.

Switch	Run time
Press: Hi → Low → Hi Long press: Turn off	Approx. 2 hours (Hi mode) * The run time varies with the environment or conditions in which it is used.

B How to Adjust Beam Angle

Adjust the beam angle to avoid dazzling oncoming traffic by slightly loosening the dial of the bracket.

NOTE:

- Do not loosen the dial too much, or the bracket strap may come off. Loosen the dial just enough to allow the bracket to move slightly. Securely tighten the dial after adjusting the strap.
- It can also be adjusted 10 degrees to the left and right.

C Remaining battery

The color of the battery indicator built into the switch shows how much battery is left.

NOTE: When the battery indication becomes red, charge the batteries as soon as possible.

Guideline for the battery indicator

Green	: More than 50% left
Yellow	: 50 to 20% left
Red	: Less than 20%. Charge the battery unit.

* The battery indicator is only an estimation of the remaining battery run-time, and varies with the environment or conditions of use.

How to Charge Battery unit

Important!

- If the battery unit is wet, wipe dry with a dry cloth before charging the batteries.
- Be sure to use only the supplied battery charger. This charger can accept 100-240 volts.
- If the charging indicator flashes green, there is a short somewhere in the circuit. Unplug the charger and remove the cause.
- If the charging indicator turns green a few minutes after charging begins or if the indicator continues a fast green flashing, stop charging, unplug the charger from the outlet, and do steps 1 and 2. If the same result occurs repeatedly, the batteries may be deteriorated.
- The standard charging time and run time are guideline values and depend on the operating environment.
- If the battery unit repeatedly does not meet the proper run time even though it is fully charged, it might be at the end of its operating life. Replace the old battery unit with a new one. The used battery unit should be disposed of properly according to local regulations.

1. Plug the battery charger to an AC outlet.

NOTE: Check that the charging indicator flashes red three times as the power lamp turns red.

2. Connect the plug of the battery charger to the plug of the battery unit.

NOTE:

- Charge the batteries with the plug locked.
- When charging is complete, the indicator light changes from flashing red to green.

3. After charging is complete, make sure to unplug the charger from the AC outlet.

Charging indicator state	Standard charging time
Red light / Blinking green light: Charge error	Approx. 3 hours
Red light / Red light : Charging	
Red light / Green light : Charging is completed	

SPECIFICATIONS

Light source	Two High-Power White LEDs
Battery unit	Rechargeable lithium-ion battery/7.4V, 2300mAh
Battery charger	CHR-2300/4600mAh Li-ion (AC100V-240V 50/60Hz)
Operating time	Approx. 2 hours (in the case of Hi) Approx. 4 hours (in the case of Low)
Standard charging time	Approx. 3 hours
Temperature range	Charging : 41°F – 104°F (5°C – 40°C) Operating: 5°F – 113°F (-15°C – 45°C)
Recharge/discharge number of times	About 300 times (until the rated capacity drops to 70%)

* The specifications and design are subject to change without notice.

SPARE PARTS

#534-1846	#534-1858	#534-1857	#534-1846	Light unit
			#534-1858	Battery unit (lithium-ion batteries 2300mAh)
			#534-1857	Battery unit (lithium-ion batteries 4600mAh)
#533-8827	#534-1831	UL: #037-5895 UK: #037-5896 EC: #037-5897 AS: #037-5899	#533-8827	H34 Bracket
			#534-1831	Bracket for the helmet
			UL: #037-5895 / UK: #037-5896 / EC: #037-5897 / AS: #037-5899	Lithium-ion battery charger
#534-1848	#534-1847	#534-1860	#534-1848	Battery clip
			#534-1847	Extension cable
			#534-1860	Battery fixing strap

CAUTION! Use only genuine spare parts from CATEYE.

LIMITED WARRANTY

2-year Warranty :

Light Unit, Battery Unit, Battery Charger (Excluding degradation of the battery unit)

If trouble or damage occurs during normal use, the product will be repaired or replaced free of charge. Type your name, address, date of purchase and the situation of trouble clearly on the warranty certificate, and send it back to the appropriate service center together with the product. Insurance, handling and transportation charges shall be borne by the customer. After being repaired or replaced, the product will be shipped back to the customer.

CATEYE CO., LTD.

2-8-25, Kuwazu, Higashi Sumiyoshi-ku,
Osaka 546-0041 Japan
Attn: CATEYE Customer Service Section
Phone : (06)6719-6863
Fax : (06)6719-6033
E-mail : support@cateye.co.jp
URL : http://www.cateye.co.jp

Service & Research Address for USA

CATEYE Service and Research Center
1705 14th St. 115 Boulder, CO 80302
Phone : 303.443.4595
Toll Free: 800.5CATEYE
Fax : 303.473.0006
E-mail : service@cateye.com
URL : http://www.cateye.com

FOR SAFE OPERATION

- Never short-circuit the terminals of the battery unit or the battery charger. It may cause the unit to overheat, resulting in fire or damage to the component.
- The battery unit uses lithium batteries. If liquid leaks from the batteries, do not touch them with bare hands and do not bring them close to fire. Dispose of properly according to local regulations.
- Securely connect the plug and fasten the strap. Otherwise, they may come off while riding, causing the light to turn off, or you could topple over if the cord gets caught in the wheel.
- Never use damaged components (e.g., cables, etc.). Send any damaged components to our customer service department for repair.
- Do not stare at the light when it is on. Doing so may damage your eyesight.
- The light unit, including the switch, becomes very hot when on or immediately after being turned off. Please use with caution to avoid burns.
- Do not place it within children's reach.
- Never disassemble the light unit, battery unit, or battery charger.
- If the lamp body or parts become dirty with mud, etc., clean with a soft cloth which is moistened with mild soap. Never apply paint thinner, benzine or alcohol; damage will result.
- If the connecting plug is dirty, clean it with the plug locked.
- This product is water-resistant under normal daily use and can be used in the rain. However, do not intentionally submerge it in water.
- We recommend carrying a flashlight or spare battery unit with you in case the main battery dies.
- Place the switch at least 20 cm away from any wireless meter, as transmitting and receiving performance may be adversely affected.

Before Initial Use

The battery is shipped with a small charge, that is used to test the unit at the factory. It is necessary to charge the battery before initial use. (Refer to the "How to Charge" section in this manual.)