



# RECHARGEABLE HEADLIGHT

ENG

# G VOLT80™

HL-EL560G RC  
K 1191



Li-ion  
3.6V

## Manual

Before using the light, please read this manual and the included separate sheet "LITHIUM-ION / LITHIUM-ION POLYMER BATTERIES" thoroughly, and keep them for future reference.



Design Pat. Pending  
Copyright© 2017 CATEYE Co., Ltd.  
HLEL560GRC-171031 5

### ⚠ WARNING!!!

- Be sure to direct the light beam downward so the driver approaching does not get dazzled.
- Before your trip, please make sure the light is firmly mounted to the bracket and it lights up.
- Always attention to the remaining battery power by checking the indicator periodically while using.

### ⚠ CAUTION!

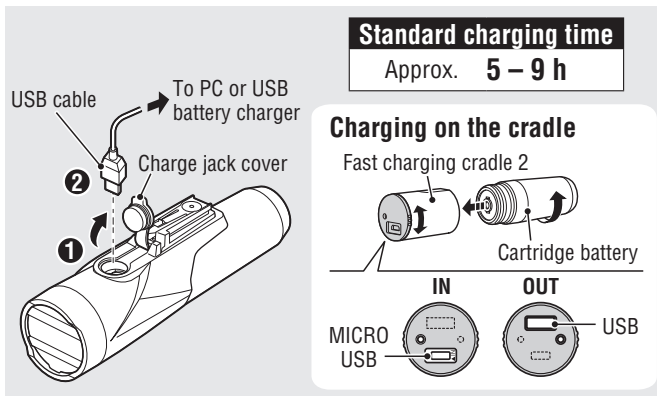
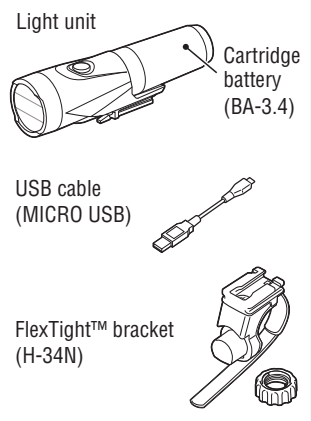
- Do not place it within children's reach.
- In preparation for unexpected battery shutoff, we recommend you carry a spare cartridge battery and light.
- Mounting the light unit too close to a wireless computer may adversely affect the reading of the computer.

- This product is water-resistant under normal daily use and can be used in the rain. However, do not intentionally submerge it in water.
- If the light unit or parts become dirty with mud, etc., clean with a soft cloth which is moistened with mild soap. Never apply paint thinner, benzene or alcohol; damage will result.
- Dispose of used cartridge batteries appropriately according to local regulations.

### ⓘ Before Initial Use

This unit is shipped with a small charge to check the light. Be sure to charge it before use, according to the instructions "HOW TO CHARGE".

## 1 HOW TO CHARGE



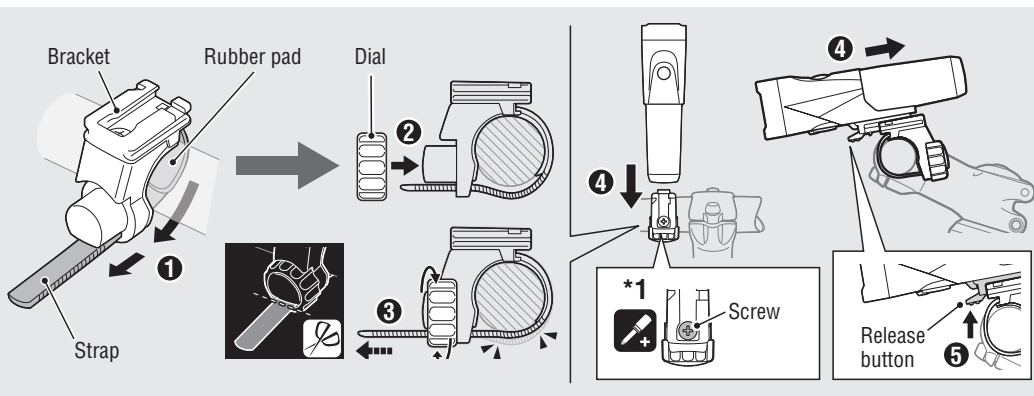
1. Connect the light unit to your PC or a commercial USB battery charger using the USB cable. (1 - 2). The switch indicator turns on and charging starts.

\* If using a cradle (optional), the indicator on the cradle turns on.

- \* When your PC is in sleep state, the unit cannot be charged.

- \* Use a USB battery charger of 500mAh (USB2.0) or more. The cartridge can be fast-charged with high capacity USB battery charger.
  - \* If the indicator flashes rapidly, there is a charging error. Remove the cable and try again.
2. After charging is completed, remove the USB cable, and install the charge jack cover.
- \* Charging and lighting times are approximate values, and will vary by environmental and user conditions.
  - \* The optional cradle2 not only lets you charge the battery by itself, but also gives you the option of using it as a mobile battery.

## 2 HOW TO MOUNT TO A BICYCLE



1. Mount the bracket to the handlebar. (1 - 3)
  2. Insert the light unit into the bracket until it clicks, and adjust the beam angle. (4)
  3. To remove the light unit, pull it forward while pressing down on the release button (5).
- \* To re-adjust the beam angle, loosen the dial enough to move the bracket, and firmly tighten it after adjustment.
  - \* The light can be mounted under the handlebar.

### CAUTION!:

- Be sure to tighten the dial by hand. When you tighten it too hard with a tool, the screw thread may be stripped.
- Check the dial and screw (\*1) on the bracket periodically, and use them without any loosening.
- Round off the cut edge of the bracket strap to prevent injury.

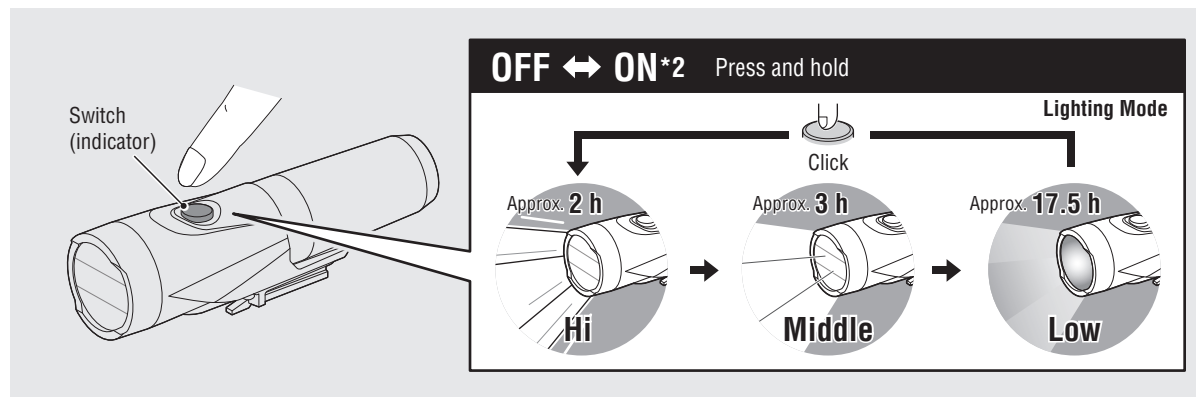
### 3 SWITCH OPERATION (SWITCHING THE LIGHTING MODE)

The ON/OFF and lighting modes are selected using a switch.

\*2 When you turn the light on, etc., it lights up in the last lighting mode used. (Mode memory function)

#### Remaining battery capacity

When the switch (indicator) lights up, the remaining battery power is 20% or less. Please charge as soon as possible.

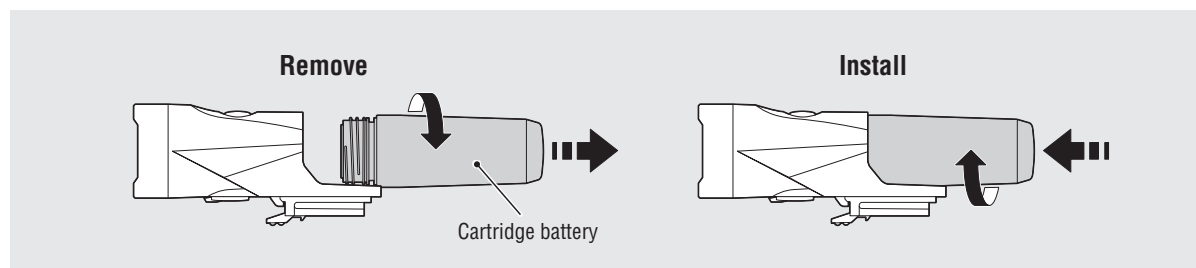


### 4 HOW TO REPLACE THE CARTRIDGE BATTERY

Turn the cartridge battery counterclockwise to remove from the unit. To install, screw the cartridge battery into the light unit until it clicks.

#### CAUTION!

- When the operating time decreases significantly, the battery life is close to an end. Replace the cartridge battery with a new one.
- When you store the cartridge battery alone, be sure to install the cap. Otherwise, damage or a fire may be caused by short circuit.



### SPECIFICATIONS

Light source	High-intensity LED x 1
Cartridge battery	Li-ion3.6v 3400mAh
Charge	Micro USB plug
Operating time	Hi : Approx. 2 hours
	Middle : Approx. 3 hours
	Low : Approx. 17.5 hours
	* Average runtime at 20°C.
Standard charging time	Approx. 5 – 9 hours
Temperature range	Charging : 41°F – 104°F (5°C – 40°C)
	Operating : 14°F – 104°F (-10°C – 40°C)
Recharge/discharge number of times	About 300 times (until the rated capacity drops to 70%)
Dimensions/weight	1-27/64" x 5-1/16" x 1-13/16" (36 x 128.5 x 46 mm) / 5.75 oz (163 g) (Including the cartridge battery)

\* The specifications and design are subject to change without notice.

### LIMITED WARRANTY

#### 2-year Warranty: Light unit only

#### (Deterioration of the cartridge battery is out of warranty)

CatEye products are warranted to be free of defects from materials and workmanship for a period of 2 years from original purchase. If the product fails to work during normal use, CatEye will repair or replace the defect at no charge. Service must be performed by CatEye or an authorized retailer. To return the product, pack it carefully and enclose the warranty certificate (proof of purchase) with instruction for repair. Please write or type your name and address clearly on the warranty certificate. Insurance, handling and transportation charges to CatEye shall be borne by person desiring service.

Please register your CatEye product on the website.  
<http://www.cateye.com/en/support/regist/>

#### CAT EYE CO., LTD.

2-8-25, Kuwazu, Higashi Sumiyoshi-ku, Osaka 546-0041 Japan  
Attn : CATEYE Customer Service Section  
Phone : (06)6719-6863  
Fax : (06)6719-6033  
E-mail : support@cateye.co.jp  
URL : <http://www.cateye.com>

### SPARE/OPTIONAL PARTS

#### 5338827N

FlexTight™ bracket

(H-34N)



#### 5341831N

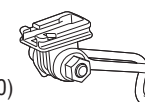
Helmet mount



#### 5342440

Center fork bracket

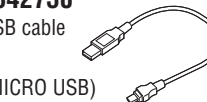
(CFB-100)



#### 5342730

USB cable

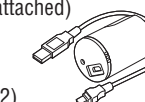
(MICRO USB)



#### 5342620

Fast charging cradle 2  
(USB cable attached)

(CRA-002)



#### 5342681

Cartridge battery  
(Li-ion3.6v 3400mAh  
: BA-3.4)

