



# BATTERY HEADLIGHT

## ECONOM FORCE™

HL-EL540

ENG



Pat. and Design Pat. Pending  
Copyright© 2012 CATEYE Co., Ltd.  
EL54-120123 [066640832] 3

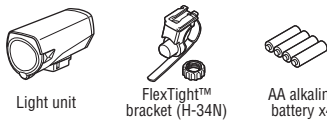
## INTRODUCTION

Before using the product, please thoroughly read this manual and keep it for future reference.

### CAUTION!

- Before your trip, please make sure the light is firmly mounted to the bracket, it lights up, and the light is not blocked by baggage, etc.
- Mount the light unit more than 7 cm away from the wireless meter. When it is mounted too close, the transmission may be affected adversely.
- This product is water-resistant under normal daily use and can be used in the rain. However, do not intentionally submerge it in water.
- If the light unit or parts become dirty with mud, etc., clean with a soft cloth which is moistened with mild soap. Never apply paint thinner, benzene or alcohol; damage will result.

## COMPONENTS



## SPECIFICATIONS

Light source.....High-intensity white LED x 1  
Battery.....AA alkaline battery x 4  
Operating time.....Hi : Approx. 2 hours, Low : Approx. 9 hours,  
Flash : Approx. 30 hours  
Temperature range...14°F - 104°F (-10°C - 40°C)  
Dimensions/weight...4-1/2" x 2-13/64" x 2-3/32" (114 x 56 x 53 mm)  
/ 8 oz (227 g) (Including batteries)

\* The specifications and design are subject to change without notice.

## LIMITED WARRANTY

**2-year Warranty: Light unit only**  
Cateye products are warranted to be free of defects from materials and workmanship for a period of 2 years from original purchase. If the product fails to work during normal use, Cateye will repair or replace the defect at no charge. Service must be performed by Cateye or an authorized retailer. To return the product, pack it carefully and enclose the warranty certificate (proof of purchase) with instruction for repair. Please write or type your name and address clearly on the warranty certificate. Insurance, handling and transportation charges to Cateye shall be borne by person desiring service. For UK and REPUBLIC OF IRELAND consumers, please return to the place of purchase. This does not affect your statutory rights.

## CATEYE CO., LTD.

2-8-25, Kumazu, Higashi Sumiyoshi-ku, Osaka 546-0041 Japan  
Attn: CATEYE Customer Service  
Phone : (06)6719-8863  
Fax : (06)6719-8033  
E-mail : support@cateye.co.jp  
URL : http://www.cateye.com

(For US Customers)  
**CATEYE AMERICA, INC.**  
2825 Wilderness Place Suite 1200,  
Boulder CO80301-5494 USA  
Phone : 303.443.4506  
Toll Free : 800.5CATEYE  
Fax : 303.473.0006  
E-mail : service@cateye.com

## SPARE PARTS



5338827N  
FlexTight™ bracket (H-34N)

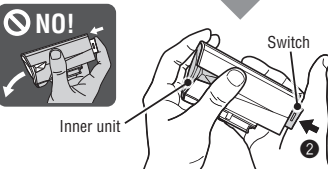
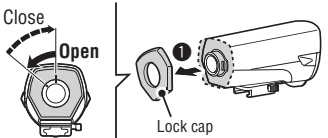
## OPTION PARTS

5341891  
Special nickel-hydride rechargeable battery x 4 (Ni-MH 2.2Ah GP220AAH)

UL : 5336760  
UK : 5336761  
EC : 5336762  
AS : 5336763  
JP : 5336764

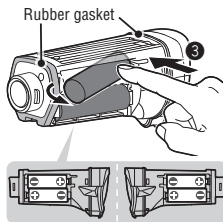
CHA-2.2AH-4.8V

## HOW TO REPLACE BATTERY

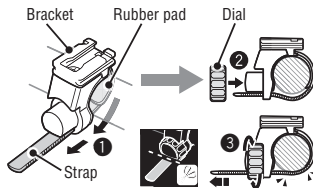


How to remove batteries

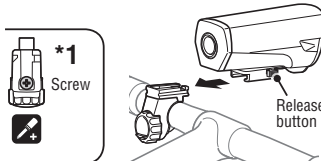
Press the lens side of the upper battery.



## HOW TO MOUNT



## HOW TO MOUNT THE LIGHT



- 1 Turn the lock cap on the back of the light counterclockwise to remove.
- 2 Press the switch slowly, and pull out the inner unit from the front.
- 3 Install the lower battery first. Remove the upper battery first by pressing the arrowed point as shown.
- 4 After replacement, check that the two rubber gaskets for the inner unit are in place, place it into the body, and fix it with the lock cap.

### CAUTION!

- To pull out the inner unit from the light, be sure to hold the lens. Otherwise, the inner unit may fall out and become damaged.
- Do not use in combination with new and old batteries, or different types of batteries.
- Be sure to install batteries in the correct direction.
- Install the two rubber gaskets correctly to maintain waterproof features.
- Remove and store batteries when you will not use the light for a long period of time. Otherwise, batteries may leak liquid, which may result in failure.

- 1 Wind the bracket strap around the handlebar, and put the strap through the opening.
- 2 Screw the dial into the bracket to secure it temporarily.  
\* Insert the light unit to the bracket until it clicks, and adjust the beam angle.  
(Refer to "HOW TO MOUNT THE LIGHT")
- 3 Securely tighten the dial, and cut off any excess bracket strap.  
\* To remove the light unit, pull out it forward while pressing the button.  
\* To re-adjust the beam angle, loosen the dial enough to move the bracket, and securely tighten it after adjustment.

### CAUTION!

- Be sure to tighten the dial by hand. When you tighten it too hard with a tool, the screw thread may be stripped.
- Check the dial and screw (\*1) on the bracket periodically, and use them without any loosening.
- Round off the cut edge of the bracket strap to prevent injury.

## HOW TO USE



Switch (indicator)

ON ↔ Off : Long press  
Hi ↔ Low : Single press  
Flash : Quick double press  
(Flash even from OFF)

## Switch operation (switching the lighting mode)

The ON/OFF and lighting modes are selected using a switch.

### Standard operating time

Hi : Approx. 2 hours  
Low : Approx. 9 hours  
Flash : Approx. 30 hours

\*2 When returning from Flash to ON (Hi or Low), it returns to the ON mode used previously.

### Remaining battery capacity

When the switch (indicator) lights up, the remaining battery level is low. Replace with new batteries.