



RECHARGEABLE HEADLIGHT

VOLT800™

MODEL : HL-EL471RC

Manual

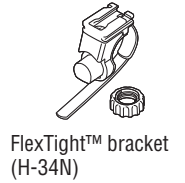
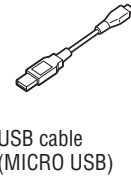
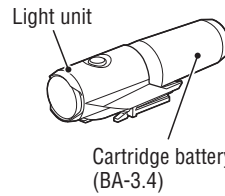
Before using the light, read this manual thoroughly and keep it for future reference.

Design Pat. Pending
Copyright© 2024 CATEYE Co., Ltd.
EL471RC-240530 5



⚠ Before Initial Use

This unit is shipped with a small charge to check the light. Be sure to charge it before use, according to the instructions "HOW TO CHARGE".



⚠ WARNING!!!

- Be sure to direct the light beam downward so the driver approaching does not get dazzled.
- Before your trip, please make sure the light is firmly mounted to the bracket and it lights up.
- Always attention to the remaining battery power by checking the indicator periodically while using.

⚠ CAUTION!

- Do not place it within children's reach.
- In preparation for unexpected battery shutoff, we recommend you carry a spare cartridge battery and light.
- Mounting the light unit too close to a wireless computer may adversely affect the reading of the computer.
- This product is water-resistant under normal daily use and can be used in the rain. However, do not intentionally submerge it in water.
- If the light unit or parts become dirty with mud, etc., clean with a soft cloth which is moistened with mild soap. Never apply paint thinner, benzine or alcohol; damage will result.

⚠ LITHIUM-ION BATTERIES

Cautions on recharging

- Avoid charging in direct sunlight or in a vehicle parked under direct sunlight, and make sure to charge only when the ambient temperature is between 41°F and 104 °F (5 and 40°C).
- Before charging, be sure that no dust or other foreign objects attach to the USB plug.
- Do not subject the light to vibrations while charging.
- Once charging is complete, be sure to disconnect the USB plug.

Cautions in use

- Charging, discharging, and storing in high temperatures will cause the rechargeable battery to deteriorate faster. Do not place the light inside a vehicle or near a heater.
- When the operating time decreases significantly, the battery life is close to an end. Replace the cartridge battery with a new one.

Cautions on storage

- Cool and dry storage is recommended. For long period storage, it is important to charge the battery 30 minutes every 6 months.
- When you store the cartridge battery alone, be sure to install the cap. Otherwise, damage or a fire may be caused by short circuit.

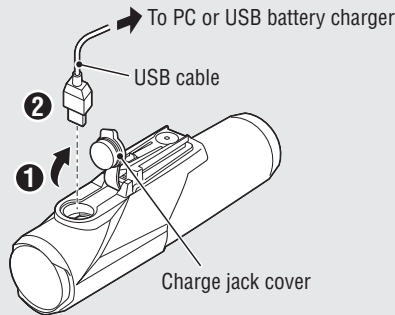
Cautions for dispose

Dispose of used cartridge batteries appropriately according to local regulations.

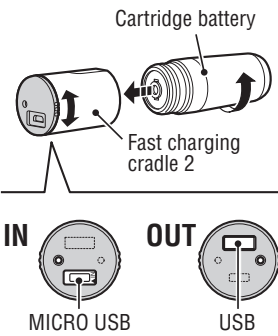
1 HOW TO CHARGE

Standard charging time

Approx. 5 – 9 h



Charging on the cradle



1. Connect the light unit to your PC or a commercial USB battery charger using the USB cable. (1 – 2).

The switch indicator turns on and charging starts.

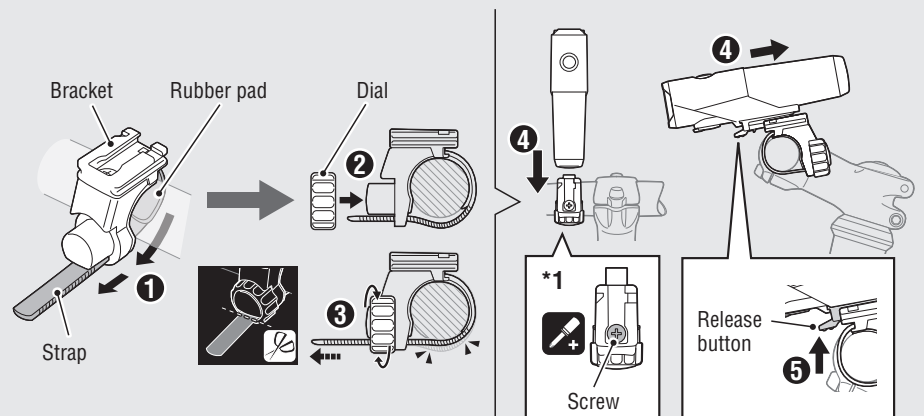
* If using a cradle (optional), the indicator on the cradle turns on.

Indicator light	State
On	(500 mA charging)
Flashing slowly	Charging (1 A charging)
Off	Charging is completed

* When your PC is in sleep state, the unit cannot be charged.

- * Use a USB battery charger of 500mAh (USB2.0) or more. The cartridge can be fast-charged with high capacity USB battery charger.
- 2. After charging is completed, remove the USB cable, and install the charge jack cover.
- * Charging time is approximate values, and will vary depending on the environmental and usage conditions.
- * The optional cradle2 not only lets you charge the battery by itself, but also gives you the option of using it as a mobile battery.

2 HOW TO MOUNT



1. Mount the bracket to the handlebar. (1 – 3)
2. Insert the light unit into the bracket until it clicks, and adjust the beam angle. (4)
3. To remove the light unit, pull out it forward while pressing down on the release button (5).
 - * To re-adjust the beam angle, loosen the dial enough to move the bracket, and firmly tighten it after adjustment.
 - * The light can be mounted under the handlebar.

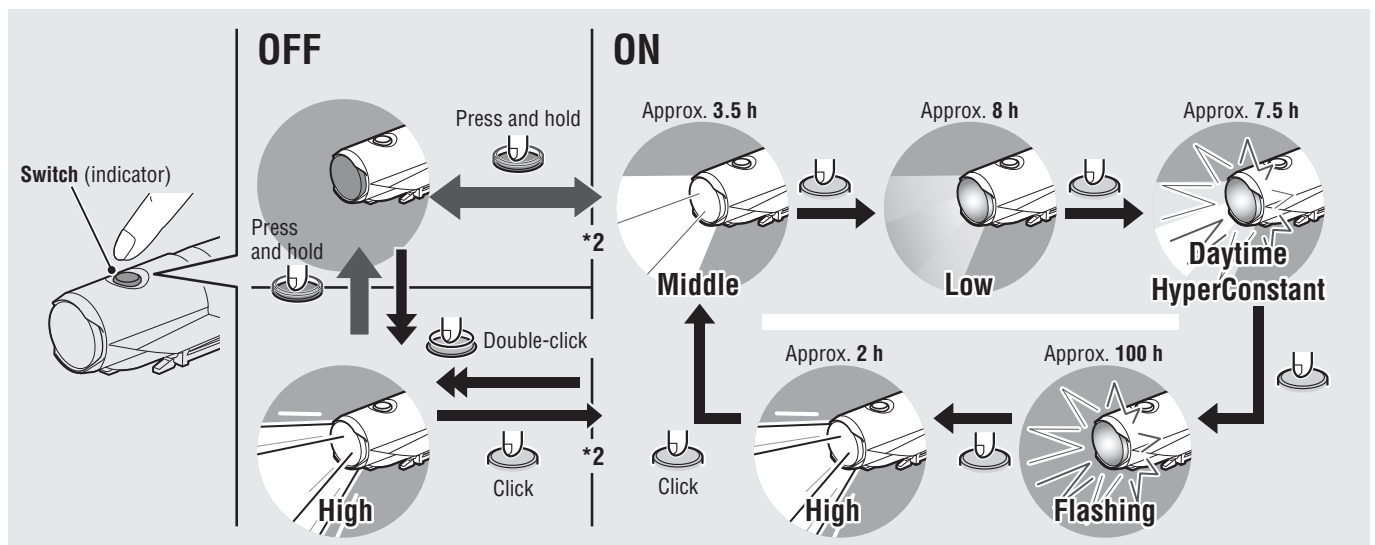
CAUTION!:

- Be sure to tighten the dial by hand. When you tighten it too hard with a tool, the screw thread may be stripped.
- Check the dial and screw (*1) on the bracket periodically, and use them without any loosening.
- Round off the cut edge of the bracket strap to prevent injury.

3 SWITCH OPERATION (SWITCHING THE LIGHTING MODE)

The ON/OFF and lighting modes are selected using a switch.

*2 When you turn the light on, etc., it lights up in the last lighting mode you used. (Mode memory function)

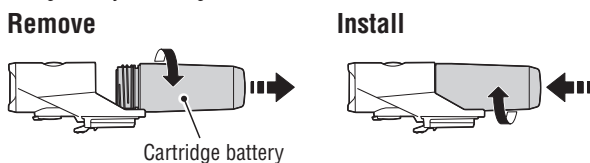


Remaining battery capacity

When the switch (indicator) lights up, the remaining battery power is 20% or less. Please charge as soon as possible.

4 HOW TO REPLACE THE CARTRIDGE BATTERY

Turn the cartridge battery counterclockwise to remove from the unit. To install, screw the cartridge battery into the light unit until it clicks.



SPARE/OPTIONAL PARTS

5338827N

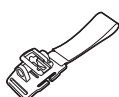
FlexTight™ bracket



(H-34N)

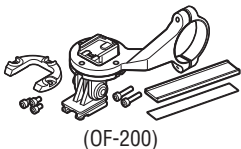
5341831N

Helmet mount



1604110

Out-front bracket 2



(OF-200)

5342681

Cartridge battery
(Li-ion 3.6V 3400mAh)



(BA-3.4)

5342440

Center fork bracket



(CFB-100)

5342730

USB cable



(MICRO USB)

5342620

Fast charging cradle 2
(USB cable attached)



(GRA-002)

SPECIFICATIONS

Light source	High-intensity LED x 1
Cartridge battery	BA-3.4 : Li-ion 3.6 V - 3400 mAh
Charge	Micro USB plug
Operating time	High : Approx. 2 hours
	Middle : Approx. 3.5 hours
	Low : Approx. 8 hours
	Daytime HyperConstant : Approx. 7.5 hours
	Flashing : Approx. 100 hours
	* Average runtime at 20°C.
Standard charging time	Approx. 5 - 9 hours
Temperature range	Charging : 41°F - 104°F (5°C - 40°C)
	Operating : 14°F - 104°F (-10°C - 40°C)
Recharge/discharge number of times	About 300 times (until the rated capacity drops to 70%)
Dimensions/weight	1-15/64" x 4-9/16" x 1-45/64" (31.2 x 116 x 43.2 mm) / 4.9 oz (140 g) (Including the cartridge battery)

* The specifications and design are subject to change without notice.

LIMITED WARRANTY

2-year Warranty: Light unit only

(Deterioration of the cartridge battery is out of warranty)

CatEye products are warranted to be free of defects from materials and workmanship for a period of 2 years from original purchase. If the product fails to work during normal use, CatEye will repair or replace the defect at no charge. Service must be performed by CatEye or an authorized retailer. To return the product, pack it carefully and enclose the warranty certificate (proof of purchase) with instruction for repair. Please write or type your name and address clearly on the warranty certificate. Insurance, handling and transportation charges to CatEye shall be borne by person desiring service. For UK and REPUBLIC OF IRELAND consumers, please return to the place of purchase. This does not affect your statutory rights.

CATEYE CO., LTD.

2-8-25, KUWAZU, HIGASHI SUMIYOSHI-KU, OSAKA, JAPAN 546-0041

For inquiries, please visit <https://cateye.com/intl/contact/>

[For US Customers]

CATEYE AMERICA, INC.

Please visit <https://www.cateyeamerica.com/contact-us/>

Toll Free : 800.5.CATEYE