



VOLT400

DUPLX™

HL-EL462RC-H

Manual



Before using the light, read this manual thoroughly and keep it for future reference.

Copyright© 2018 CATEYE Co., Ltd.
EL462RCH-180302 3



ENG

⚠ WARNING!!!

- Be sure to direct the light beam downward so the driver approaching does not get dazzled.
- Before your trip, please make sure the light is firmly mounted to the bracket and it lights up.
- Always attention to the remaining battery power by checking the indicator periodically while using.

⚠ CAUTION!

- Do not place it within children's reach.
- In preparation for unexpected battery shutoff, we recommend you carry a spare cartridge battery and light.
- This product is water-resistant under normal daily use and can be used in the rain. However, do not intentionally submerge it in water.
- If the light unit or parts become dirty with mud, etc., clean with a soft cloth which is moistened with mild soap. Never apply paint thinner, benzene or alcohol; damage will result.

⚠ LITHIUM-ION BATTERIES

Cautions on recharging

- Avoid charging in direct sunlight or in a vehicle parked under direct sunlight, and make sure to charge only when the ambient temperature is between 41°F and 104 °F (5 and 40°C).
- Before charging, be sure that no dust or other foreign objects attach to the USB plug.
- Do not subject the light to vibrations while charging.
- Once charging is complete, be sure to disconnect the USB plug.

Cautions in use

- Charging, discharging, and storing in high temperatures will cause the rechargeable battery to deteriorate faster. Do not place the light inside a vehicle or near a heater.
- When the operating time decreases significantly, the battery life is close to an end. Replace the cartridge battery with a new one.

Cautions on storage

- Cool and dry storage is recommended. For long period storage, it is important to charge the battery 30 minutes every 6 months.
- When you store the cartridge battery alone, be sure to install the cap. Otherwise, damage or a fire may be caused by short circuit.

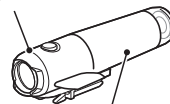
Cautions for dispose

Dispose of used cartridge batteries appropriately according to local regulations.

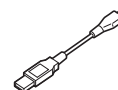
⚠ Before Initial Use

This unit is shipped with a small charge to check the light. Be sure to charge it before use, according to the instructions "HOW TO CHARGE".

Light unit



Taillight integrated cartridge battery (BA-2.6-R)

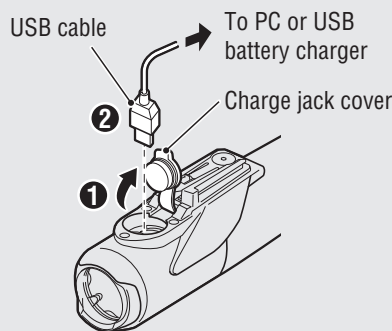


USB cable (MICRO USB)



Helmet mount

1 HOW TO CHARGE

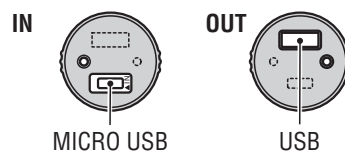
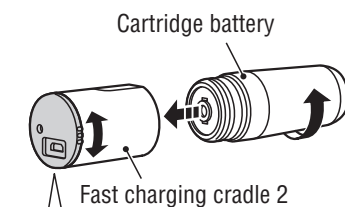


Standard charging time

Approx. 6 h
(USB 2.0)

Optional

Charging on the cradle



1. Connect the light unit to your PC or a commercial USB battery charger using the USB cable. (Fig 1 ① - ②). The switch indicator turns on and charging starts.

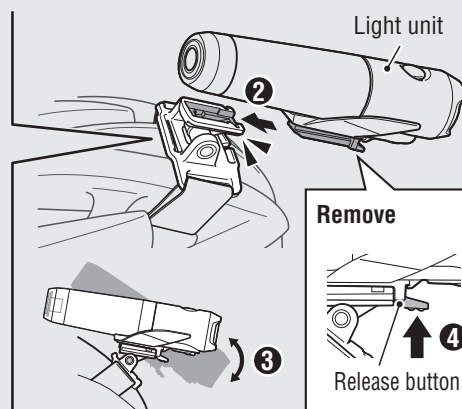
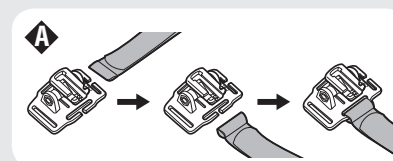
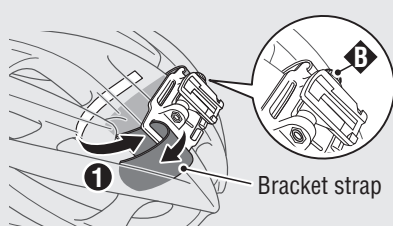
Indicator light:	Charging
Illuminated in red	
Indicator light: Off	Charging is completed

- * When your PC is in sleep state, the unit cannot be charged.
- * We recommend using 500+mAh (USB2.0) USB battery charger.
- * If using the Fast charging cradle2 (optional), the indicator on the cradle turns on.

2. After charging is completed, remove the USB cable, and install the charge jack cover.

- * Charging and lighting times are approximate values, and will vary by environmental and user conditions.
- * The cartridge battery can be fast-charged by using the optional charging cradle (about 4 - 5 hours of charging time). Use a 1A or higher USB charging adapter when charging by the cradle.
- * The optional cradle2 not only lets you charge the battery by itself, but also gives you the option of using it as a mobile battery.

2 HOW TO MOUNT TO A HELMET



1. Securely fasten the helmet mount to the front part of the helmet, wrapping the bracket strap through the air vents on the helmet. (Fig 2 ①)
⚠ The bracket strap can be attached either vertically or horizontally.
2. Mount the light unit onto the helmet mount. (②)

3. Wear the helmet and adjust the angle of the beam. (③)
4. To remove the light unit, pull out it forward while pressing down on the release button (④).

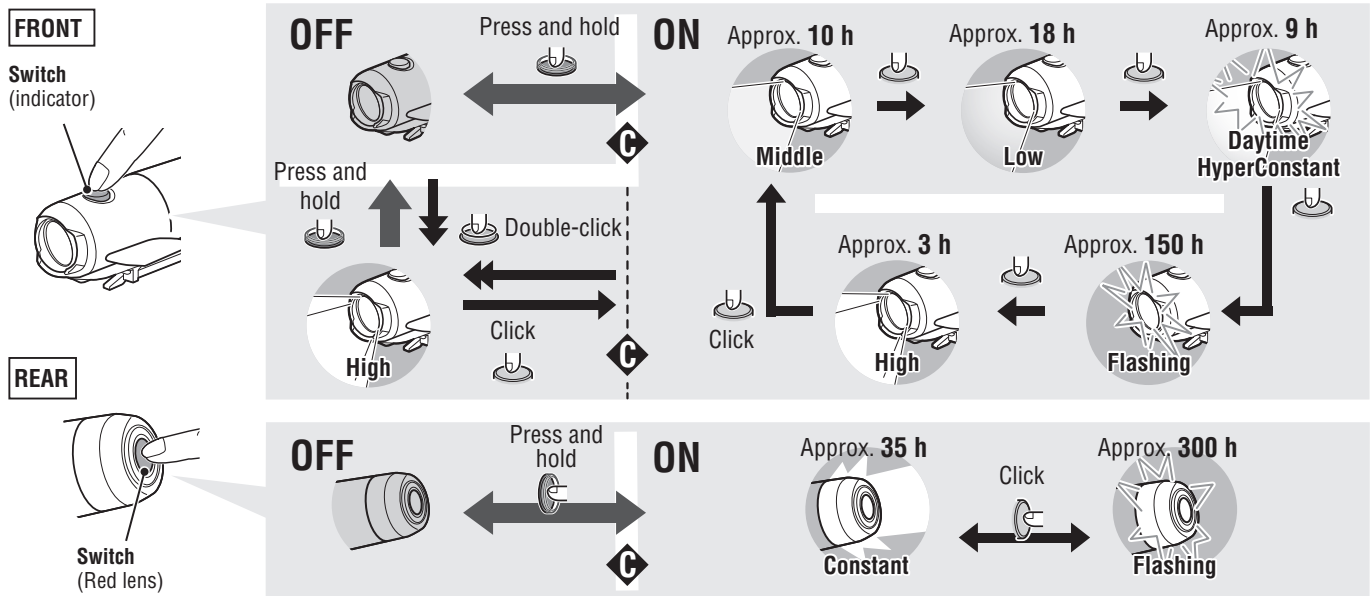
CAUTION!

Check the screw on the bracket periodically, and use it without any loosening. (⚠)

3 SWITCH OPERATION (SWITCHING THE LIGHTING MODE)

Press the switch on the light unit or on the cartridge battery to turn the light on/off or to select the lighting mode.

⚡ When you turn the light on, it lights up in the last lighting mode you used. (Mode memory function)

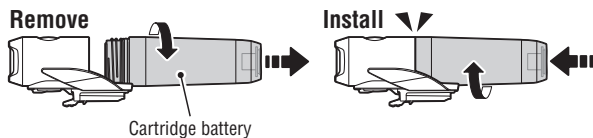


Remaining battery capacity

When the switch (indicator) lights up, there is little remaining battery power. Please charge as soon as possible.

4 HOW TO REPLACE THE CARTRIDGE BATTERY

Turn the cartridge battery counterclockwise to remove from the unit. To install, screw the cartridge battery into the light unit until it clicks.



SPARE / OPTIONAL PARTS

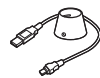
5341831N
Helmet mount



5342730
USB cable



5342720
Fast charging cradle (USB cable attached)



5342620
Fast charging cradle 2 (USB cable attached)



5342890
Taillight integrated cartridge battery (Li-ion3.6v 2600 mAh)



5342681
Cartridge battery (Li-ion3.6v 3400 mAh)



5342710
Cartridge battery (Li-ion3.6v 2200 mAh)



SPECIFICATIONS

Light source	High-intensity LED x 1
Cartridge battery	BA-2.6-R : Li-ion 3.6v 2600 mAh
Charge	Micro USB plug
Operating time	* Average runtime at 20°C.
FRONT	High : Approx. 3 hours Middle : Approx. 10 hours Low : Approx. 18 hours Daytime HyperConstant : Approx. 9 hours Flashing : Approx. 150 hours * When the rear light is turned off.
REAR	Constant : Approx. 35 hours Flashing : Approx. 300 hours * When the front light is turned off.
FRONT / REAR	High / Constant : Approx. 3 hours Flashing / Constant : Approx. 30 hours * When both lights are turned on.
Standard charging time	Approx. 6 hours (USB2.0)
Temperature range	Charging : 41°F – 104°F (5°C – 40°C) Operating : 14°F – 104°F (-10°C – 40°C)
Recharge/discharge number of times	About 300 times (until the rated capacity drops to 70%)
Dimensions/weight	4-63/64" x 1-43/64" x 1-15/64" (127 x 42.5 x 31 mm) / 3.83 oz (108.5 g) (Including the cartridge battery)

* The specifications and design are subject to change without notice.

LIMITED WARRANTY

2-year Warranty: Light unit only (Deterioration of the cartridge battery is out of warranty)

CatEye products are warranted to be free of defects from materials and workmanship for a period of 2 years from original purchase. If the product fails to work during normal use, CatEye will repair or replace the defect at no charge. Service must be performed by CatEye or an authorized retailer. To return the product, pack it carefully and enclose the warranty certificate (proof of purchase) with instruction for repair. Please write or type your name and address clearly on the warranty certificate. Insurance, handling and transportation charges to CatEye shall be borne by person desiring service.

For UK and REPUBLIC OF IRELAND consumers, please return to the place of purchase. This does not affect your statutory rights.

CAT EYE CO., LTD.

2-8-25, Kuwazu, Higashi Sumiyoshi-ku,
Osaka 546-0041 Japan
Attn: CATEYE Customer Service Section
Phone : (06)6719-6863
Fax : (06)6719-6033
E-mail : support@cateye.co.jp
URL : http://www.cateye.com

[For US Customers]

CATEYE AMERICA, INC.
2825 Wilderness Place Suite 1200, Boulder CO 80301-5494 USA
Phone : 303.443.4595
Toll Free: 800.5CATEYE
Fax : 303.473.0006
E-mail : service@cateye.com