

ENG

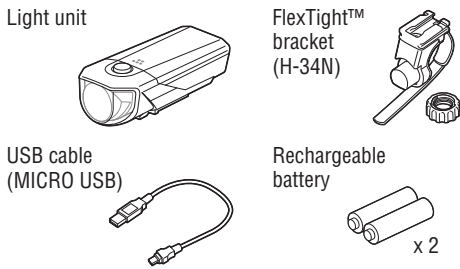


RECHARGEABLE HEADLIGHT
VOLT20™

HL-EL350G RC
Manual
K 1187 **NI-MH 2.4V**

Before using the light, please read this manual and the included separate sheet "NIMH BATTERIES" thoroughly, and keep them for future reference.

Design Pat. Pending
Copyright © 2018 CATEYE Co., Ltd.
HLEL350GRC-18053 4

⚠️ PRECAUTIONS ON USE

- Before your trip, please make sure the light is firmly mounted to the bracket, it lights up, and the light is not blocked by baggage, etc.
- Do not place it within children's reach.
- Do not use a dry battery (primary battery) together with a rechargeable battery. Do not use a new battery in combination with an old battery.
- Be sure to install batteries in the correct direction.
- In preparation for unexpected battery shutoff, we recommend you carry a spare battery.
- Mounting the light unit too close to a wireless computer may adversely affect the reading of the computer.
- Remove and store batteries when you will not use the light for a long period of time. Otherwise, batteries may leak liquid, which may result in failure.
- This product is water-resistant under normal daily use and can be used in the rain. However, do not intentionally submerge it in water.
- If the light unit or parts become dirty with mud, etc., clean with a soft cloth which is moistened with mild soap. Never apply paint thinner, benzene or alcohol; damage will result.

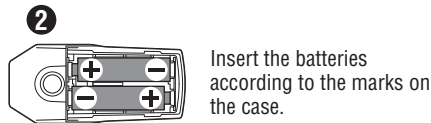
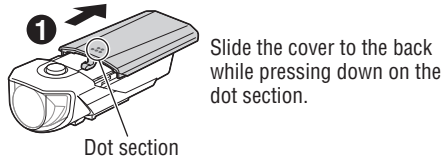
⚠️ WARNINGS AND PRECAUTIONS ON CHARGING

- Do not charge when dry batteries are installed.
- Be sure to charge the CatEye genuine rechargeable battery only as prescribed.
- Commercially available rechargeable batteries should be charged with a compatible battery charger.
- We recommend using 500+mA (USB2.0) USB battery charger.
- When your PC is in sleep state, the unit cannot be charged.
- Charging and lighting times are approximate values, and will vary by environmental and user conditions.
- Dispose of the rechargeable battery appropriately according to local regulations.

⚠️ PRECAUTIONS WHEN MOUNTING

- Be sure to tighten the dial by hand. When you tighten it too hard with a tool, the screw thread may be stripped.
- Round off the cut edge of the bracket strap to prevent injury.
- To re-adjust the beam angle, loosen the dial enough to move the bracket, and firmly tighten it after adjustment.

1 HOW TO INSTALL BATTERY



In place of rechargeable batteries, AA batteries can be used for this light.

WARNING!!!
Do not charge when dry batteries are installed.

2 HOW TO CHARGE

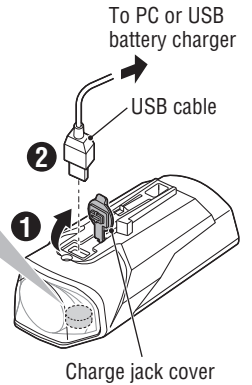
❗ Always charge the product before use.

Switch (Indicator)



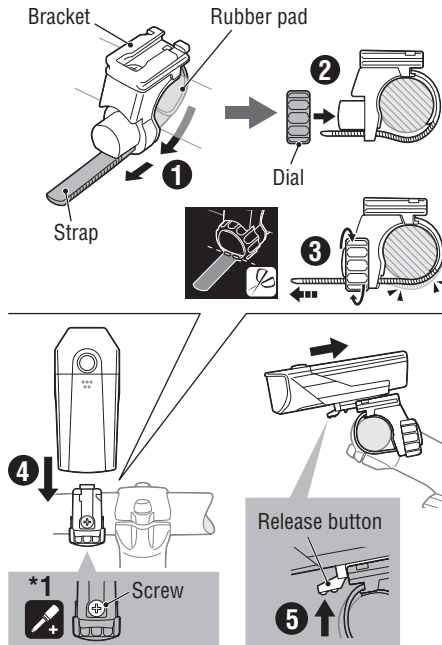
Standard charging time

Approx. **4 h**
(USB 2.0)

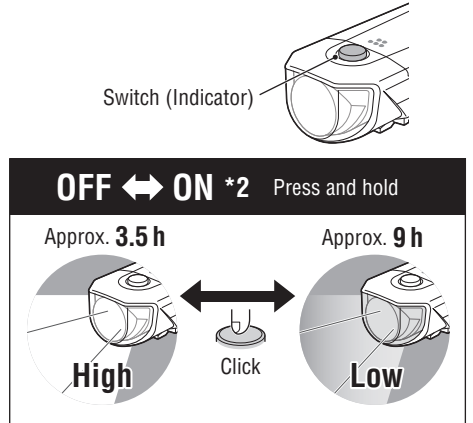


* If the indicator flashes, there is a charging error. Remove the cable and try again.

3 HOW TO MOUNT TO A BICYCLE



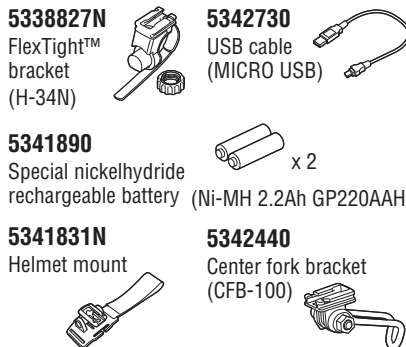
4 SWITCH OPERATION



It is recommended to use only rechargeable battery, otherwise runtime may vary considerably.

- *1 Check the dial and screw on the bracket periodically, and use them without any loosening.
- *2 When you turn the light on, it lights up in the last lighting mode you used. (Mode memory function)
- * When the switch (indicator) lights up, the remaining battery power is 20% or less. Please charge as soon as possible.

SPARE / OPTIONAL PARTS



SPECIFICATIONS

Battery : AA Ni-MH 2.2Ah (GP220AAH) rechargeable battery x 2, or AA alkaline battery x 2
Temperature range : 14°F - 104°F (-10°C - 40°C)
Recharge / discharge number of times : About 300 times (until the rated capacity drops to 70%)
Dimensions / weight: 1-39/64" x 3-37/64" x 1-7/16" (41 x 91 x 36.5 mm) / 3.63 oz (103 g)

* The specifications and design are subject to change without notice.

LIMITED WARRANTY

2-year Warranty: Light unit only (Deterioration of the battery is excluded.)

CatEye products are warranted to be free of defects from materials and workmanship for a period of 2 years from original purchase. If the product fails to work during normal use, CatEye will repair or replace the defect at no charge. Service must be performed by CatEye or an authorized retailer. To return the product, pack it carefully and enclose the warranty certificate (proof of purchase) with instruction for repair. Please write or type your name and address clearly on the warranty certificate. Insurance, handling and transportation charges to CatEye shall be borne by person desiring service.

CAT EYE CO., LTD.

2-8-25, Kuwazu, Higashi Sumiyoshi-ku, Osaka 546-0041 Japan
Attn : CATEYE Customer Service Section
Phone : (06)6719-6863
Fax : (06)6719-6033
E-mail : support@cateye.co.jp
URL : http://www.cateye.com