

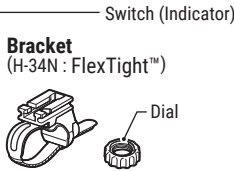
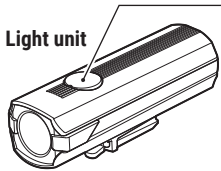


# RECHARGEABLE HEADLIGHT AMPP40CS™

MODEL : HL-EL084S RC

Before using the product, be sure to read this manual thoroughly and keep it available for future reference. If a child uses it, the child's guardian must read the manual and explain the precautions for use to the child. This product is developed assuming use by bicycle. Do not use the product in any way other than as described in this manual.

Design Pat. Pending  
Copyright© 2024 CATEYE Co., Ltd.  
HLEL084SRC-240620 1



CATEYE will continue to contribute to society by creating new values in "Safety," "Health," and "Environment". CATEYE supports the Sustainable Development Goals movement proposed by the United Nations.  
(www.cateye.com/intl/company/sdgs/)

The USB cable is not included in the package because CATEYE is committed to making environmentally friendly and resource-saving products.

## ⚠️ WARNING!!! (Risk of death; Prevention of accidents)

- Do not look directly at the light source. In addition, when mounting the light unit, ensure that the light would not dazzle other road users.
- To prevent accidents and to ensure safe riding, make sure the light is securely attached to the bracket and it is functioning properly without being unobstructed before the ride.
- Always pay attention to the remaining battery power by checking the indicator periodically while using the light.
- Do not disassemble or modify the light or any of the included items.

## ⚠️ CAUTION! (Prevention of injury, damage, or property damage)

- Be sure to tighten the dial by hand. When you tighten it too hard with a tool, the screw thread may be stripped.
- Check the dial and screw on the bracket periodically, and use them without any loosening.
- Operating the light while riding is dangerous. Always ride safely.
- Note that the light becomes hot while illuminated. Do not block the lens or cover the light.
- Keep device out of the reach of children.
- When used with a cyclocomputer, attach the headlight as far away from the cyclocomputer as possible, as it may affect measurement.
- This device is rated IPX4 based on JIS C0920. Do not immerse the device in water. Doing so may cause a malfunction. Wipe off any moisture after using the device in rainy weather.
- Do not subject the light to strong vibrations, impacts, or excessive force. Discontinue use if any abnormality occurs.
- Do not charge or use the battery at any voltage or polarity other than that specified. Do not short-circuit the battery.
- Do not drop the light into a fire or heat the light.
- If the light unit or parts become dirty with mud, etc., clean with a soft cloth which is moistened with mild soap. Never apply paint thinner, benzine or alcohol; damage will result.
- Due to the variability of LEDs, the color and brightness may differ even between devices with the same model number.
- Carrying a spare headlight is recommended in case the battery runs out.

## ⚠️ LITHIUM-ION BATTERIES

Recharge the battery for first time use or after long period of storage :

The voltage of the battery may drop due to self-discharge during long period of storage.

- Always fully charge the battery before use.
- If the device will not be used for a long period of time, store it in a location that is not too hot or too humid.
- Charge the battery for about 30 minutes every 6 months.

### Cautions for charging and usage :

- Charging, discharging, and storing in high temperatures will cause the rechargeable battery to deteriorate faster. Do not place the light inside a vehicle or near a heater. Make sure to charge only when the ambient temperature is between 5 and 40°C.
- Please be sure that no dust or other foreign objects are attached to the plug of the USB cable before charging.
- Do not apply a load to the connector port by hanging the light unit during charging.
- Do not subject the light to vibrations while charging.
- Once charging is completed, be sure to disconnect the USB cable from the charging port.
- After charging is complete, securely attach the charging port cover to ensure waterproofing before riding.
- Charging and lighting times are approximate values, and will vary by environmental and user conditions.
- If the illumination time is significantly reduced even after proper charging, the rechargeable battery may be nearing the end of its service life.

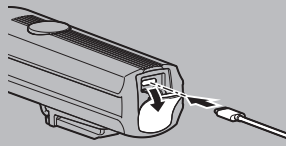
### Cautions for dispose :

When disposing the light unit, please do so in accordance with your local regulations.

## Required Items

Please prepare a USB cable (Type-C) that can be used for charging (sold separately) before using this product.

⚠️ Before using the product, refer to the "LITHIUM-ION BATTERIES" section and charge the battery.

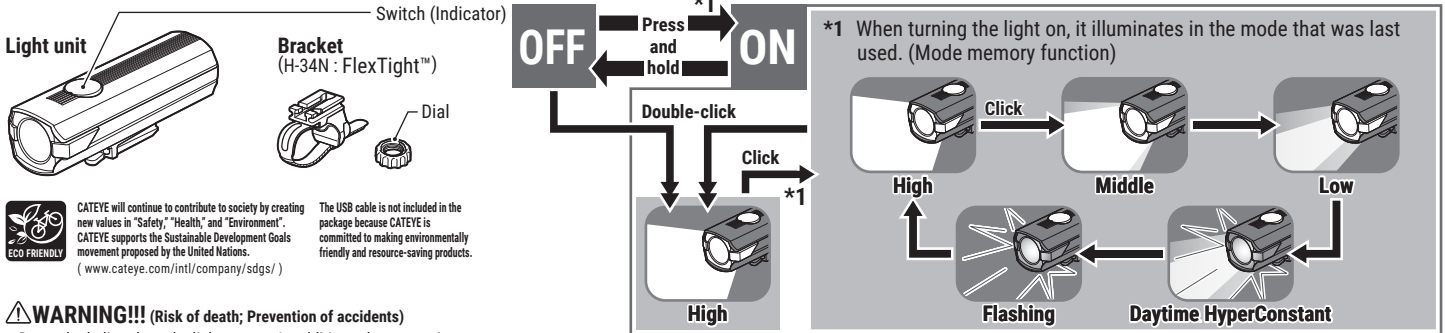


## Charging time

Approx.

4h (1A)

	Constant red light	Charging
	Off	Charging is completed

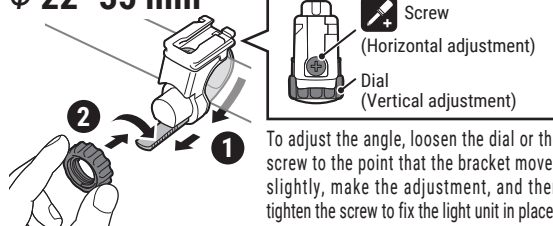


	Constant red light
Remaining battery power	Less than Approx. 20%

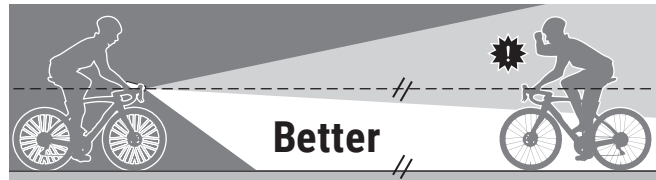
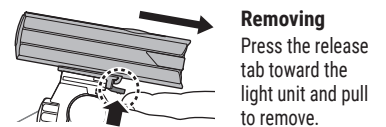
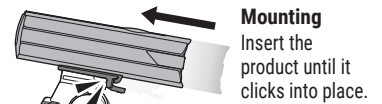
If the indicator turns red, charge the product as soon as possible.

## How to mount to a bicycle

φ 22 - 35 mm



To adjust the angle, loosen the dial or the screw to the point that the bracket moves slightly, make the adjustment, and then tighten the screw to fix the light unit in place.



Better

When mounting the light unit, ensure that the light would not dazzle other road users.

## Standard accessories

5338827N Bracket (H-34N : FlexTight™)



5340920 Bracket Spacer (H-37)

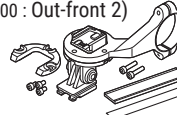


## Optional accessories

5342550 USB cable (Type-A ↔ Type-C)



1604110 Bracket (OF-200 : Out-front 2)



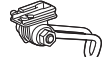
5341831N Bracket (Helmet mount)



5343540 Bracket (H-34N CENTER : Center)



5342440 Bracket (CFB-100 : Center fork)



5343550 Bracket (H-34N AERO : Aero)



Use only genuine components to prevent accidents and malfunctions.

## SPECIFICATIONS

Light source	LED x 1	
Battery	Li-ion 3.7 V · 2200 mAh	
Charge terminal	USB Type-C	
Operating time *2	High	: Approx. 2 hours
	Middle	: Approx. 4 hours
	Low	: Approx. 8 hours
	Daytime HyperConstant	: Approx. 6 hours
	Flashing	: Approx. 60 hours
Charging time	Approx. 4 hours (1 A)	
Charge voltage	5 V	
Temperature range	Charging : 41°F - 104°F (5°C - 40°C)	
	Operating : 14°F - 104°F (-10°C - 40°C)	
Waterproof	IPX4	
Recharge / discharge number of times	About 300 times (until the rated capacity drops to 70%)	
Dimensions	1-27/64" x 3-61/64" x 1-33/64" (36 x 100.5 x 38.5 mm)	
Weight	3.74 oz (106 g)	

\*2 Approximate average runtime at 68°F (20°C).

\* The specifications and design are subject to change without notice.

## LIMITED WARRANTY

### 2-year Warranty: Light unit only (excludes battery deterioration)

CatEye products are warranted to be free of defects from materials and workmanship for a period of 2 years from original purchase. If the product fails to work during normal use, CatEye will repair or replace the defect at no charge. Service must be performed by CatEye or an authorized retailer. To return the product, pack it carefully and enclose the warranty certificate (proof of purchase) with instruction for repair. Please write or type your name and address clearly on the warranty certificate. Insurance, handling and transportation charges to CatEye shall be borne by person desiring service. For UK and REPUBLIC OF IRELAND consumers, please return to the place of purchase. This does not affect your statutory rights.

### CATEYE CO., LTD.

2-8-25, KUWAZU, HIGASHI SUMIYOSHI-KU, OSAKA, JAPAN 546-0041

For inquiries, please visit <https://cateye.com/intl/contact/>

### [For US Customers]

CATEYE AMERICA, INC.

Please visit <https://www.cateyeamerica.com/contact-us/>

Toll Free : 800.5.CATEYE