

ENG

K 1808
E-BIKE HEADLIGHT

GE100™

HL-EB570G
Instruction Manual for
E-Bike Dealers

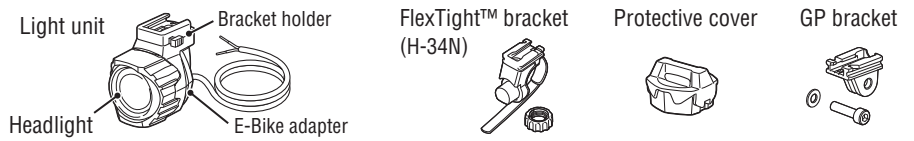
OPTI CUBE

CE

Design Pat. Pending
Copyright © 2020 CATEYE Co., Ltd.
HLEB570G-200924 1

GE100 FEATURES

The GE100 headlight connects directly to the E-Bike drive unit for use. The headlight includes a visor to direct the light distribution, allowing the unit to be mounted on the top or bottom of the handlebar. See "Mounting above or below the handlebar" for how to change the mounting position of the E-Bike adapter. The headlight can also be attached to a cartridge battery (optional) for use as a rechargeable battery headlight. See "USING THE CARTRIDGE BATTERY (OPTIONAL)" for more information.



1 HOW TO MOUNT TO A BICYCLE

- This instruction manual is intended for use by E-Bike specialists. Do not attempt to install this headlight if you are not experienced with E-Bikes. Consult your dealer for more information.
- After mounting the headlight, dealers are expected to explain how to use the light and to provide this instruction manual to the customer.

⚠ WARNING!!!

- Make sure the illumination angle will not dazzle oncoming traffic, and never position the visor to the bottom of the headlight.
- Before your trip, please make sure the light is firmly mounted to the bracket and it lights up.

⚠ CAUTION!

- Do not place it within children's reach.
- Do not remove the E-Bike adapter when the light is on.
- Do not attach the E-Bike adapter if water droplets, dust, or other foreign matter is attached to the unit. Also, do not touch the terminals.
- Never use a high-pressure hose to clean the light.
- Always connect the front and rear light with the 2-core wire.
- The cable exits have to point downwards to keep the housings waterproof.
- This device is rated IPX4 based on JIS C0920. Do not immerse the device in water. Doing so may cause a malfunction. Wipe off any moisture after using the device in rainy weather.
- If the light unit or parts become dirty with mud, etc., clean with a soft cloth which is moistened with mild soap. Never apply paint thinner, benzene or alcohol; damage will result.

LEGAL INFORMATION

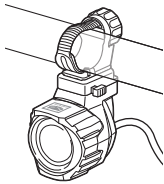
Only road legal in Germany if installed on bicycles with pedal assist function up to 25 km/h that are also equipped with a battery charge indicator and function to switch off the motor to prevent a deep discharge of the battery to ensure that the lighting function is available when needed.

SPECIFICATIONS

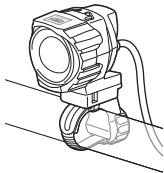
Light source	High-brightness multi-white LED
Temperature range	14°F – 104°F (-10°C – 40°C)
Waterproof	IPX4
E-Bike output compatibility	
• Input voltage	DC5.5 – 14.5 V
• Power consumption	6.8 W Nominal power(s)
• Cable length	Approx. 150 cm (Red: Positive / Black: Negative)
Dimensions/weight	2-9/16" x 2-31/64" x 51/64" (65.0 x 63.0 x 45.5 mm) / 3.5 oz (94.5 g) (Light unit only)

* The specifications and design are subject to change without notice.

Mounted below



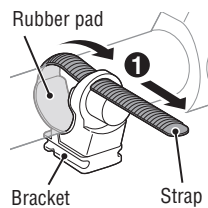
Mounted above



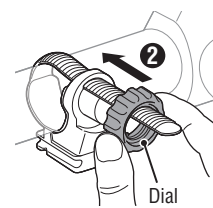
Mounting height :
400 – 1200 mm

* This section explains how to mount the light unit below the handlebar.

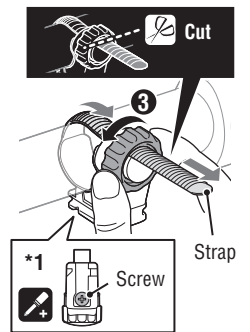
1. Mounting the bracket



Wrap the strap around the handlebar.



Attach the dial.



Securely tighten the dial.

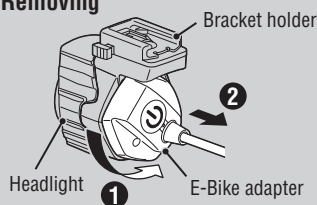
CAUTION!

- Be sure to tighten the dial by hand. When you tighten it too hard with a tool, the screw thread may be stripped.
- Check the dial and screw (*1) on the bracket periodically, and use them without any loosening.
- Round off the cut edge of the bracket strap to prevent injury.

2. Mounting above or below the handlebar

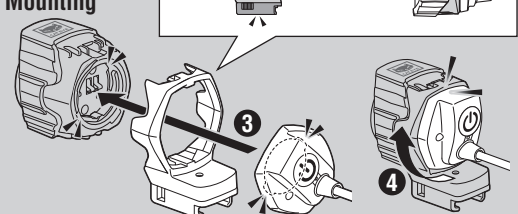
The head unit can be mounted on either above or below the handle by positioning the visor of the head unit to the top.

Removing



Turn the E-Bike adapter counterclockwise to separate the adapter from the headlight and the bracket holder.

Mounting



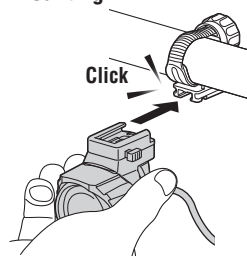
Turn the bracket holder and align the grooves on the E-Bike adapter to the grooves on the headlight, and turn clockwise until the adapter stops.

CAUTION!

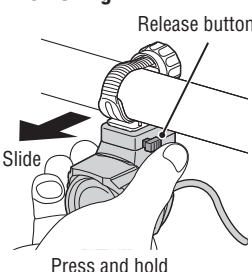
- When attaching or removing the E-Bike adapter, be sure to hold the headlight to prevent it from dropping and becoming damaged.
- Do not attach the cartridge battery if water droplets, dust, or other foreign matter is attached to the unit, and do not touch the terminals.
- Never position the visor to the bottom of the headlight. Doing so will dazzle oncoming traffic.

3. Attaching/removing the light

Mounting



Removing



NO! Horizontal

OK

When mounting the light unit, ensure that the light will not dazzle other road users. To adjust the angle, loosen the dial or the screw (*1) to the point that the bracket moves slightly, make the adjustment, and then tighten the screw to fix the light unit in place.

1 HOW TO MOUNT TO A BICYCLE (Continue)

4. Connecting to the drive unit

Connect the E-Bike adapter cable to the E-Bike drive unit.

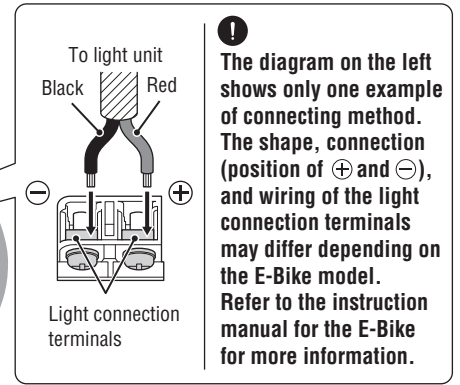
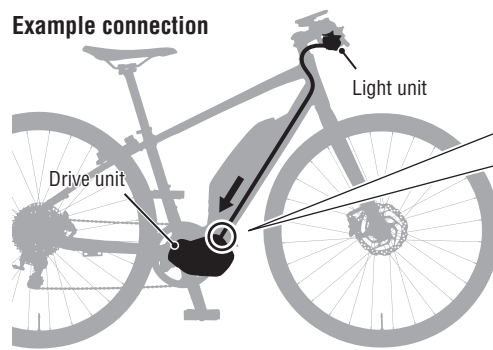
CAUTION!:

Be sure to check "E-Bike output compatibility" before connecting to the drive unit, and be sure to connect to the drive unit correctly.

E-Bike output compatibility

Input voltage	DC5.5 - 14.5 V
Power consumption	6.8 W Nominal power(s)
Cable length	Approx. 150 cm (Red: Positive / Black: Negative)

Example connection



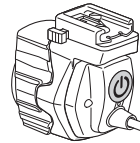
2 SWITCH OPERATION

OFF ↔ ON Controller operation

! The light unit can be turned on/off using the E-Bike controller.

The operation of the controller may differ depending on the E-Bike model. Refer to the instruction manual for the E-Bike for more information.

Switching the lighting mode



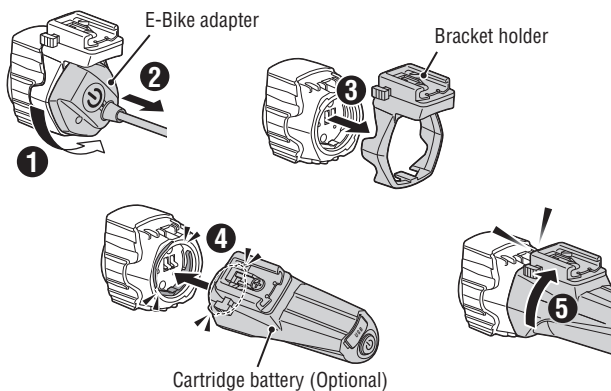
Switch



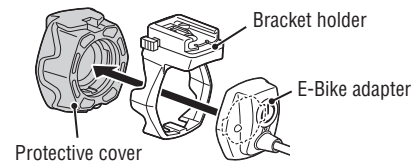
When the light unit is turned on, press the switch to change the lighting mode.

*2 If the bicycle is stationary for a certain period of time, brightness is reduced to prevent the temperature from rising.

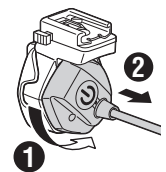
USING THE CARTRIDGE BATTERY (OPTIONAL)



Attaching the protective cover.



Removing the E-Bike Adapter

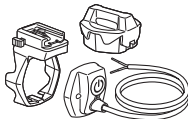


Caution! : Make sure the protective cover is securely attached to the E-Bike adapter.

SPARE/OPTIONAL PARTS

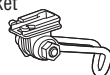
5336920

E-Bike adapter
(Min 5.5V-Max 14.5V)



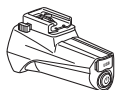
5342440

Center fork bracket
(CFB-100)



5336840

Cartridge battery
(BA-3.4DS)



5445340

GP bracket



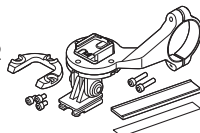
5338827N

FlexTight™ bracket
(H-34N)



1604110

Out-front bracket 2
(OF-200)



5336860

Protective cover



LIMITED WARRANTY

2-year warranty: Light unit only (excludes accessories/attachments)

CatEye products are warranted to be free of defects from materials and workmanship for a period of 2 years from original purchase. If the product fails to work during normal use, CatEye will repair or replace the defect at no charge. Service must be performed by CatEye or an authorized retailer. To return the product, pack it carefully and enclose the warranty certificate (proof of purchase) with instruction for repair. Please write or type your name and address clearly on the warranty certificate. Insurance, handling and transportation charges to CatEye shall be borne by person desiring service.

CATEYE CO.,LTD.

2-8-25, Kuwazu, Higashi Sumiyoshi-ku, Osaka 546-0041 Japan
Attn: CATEYE Customer Service Section
Phone : (06)6719-6863 Fax : (06)6719-6033
E-mail : support@cateye.co.jp URL : https://www.cateye.com