



ENG  
K 1808  
E-BIKE HEADLIGHT

# GE100™

Connector specifications HL-EB570G

Instruction Manual for E-Bike Dealers

Design Pat. Pending  
Copyright © 2021 CATEYE Co., Ltd.  
HLEB570G-210521 1



This instruction manual is intended for use by E-Bike specialists.

Do not attempt to install this headlight if you are not experienced with E-Bikes. Consult your dealer for more information.

After mounting the headlight, dealers are expected to explain how to use the light and to provide this instruction manual to the customer.

## WARNING!!!

(Risk of death; Prevention of accidents)

- Do not look directly at the light source. In addition, when mounting the light unit, ensure that the light will not dazzle other road users. Position the visor of the head unit to the top of the headlight.
- Before your trip, please make sure the light is firmly mounted to the bracket and it lights up. The light must not be obscured.
- Do not disassemble or modify the light or any of the included items.

## CAUTION!

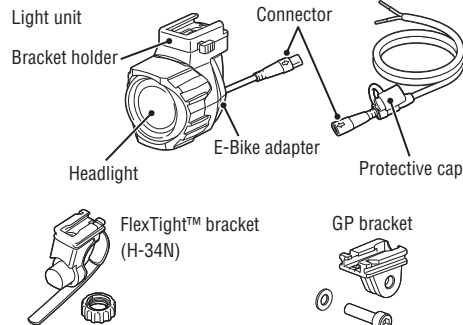
(Prevention of injury, damage, or property damage)

- Operating the light while riding is dangerous. Always ride safely.
- Note that the light becomes hot while illuminated. Do not block the lens or cover the light.
- Due to the variability of LEDs, the color and brightness may differ even between devices with the same model number.
- Do not place it within children's reach.
- Do not remove the E-Bike adapter when the light is on.
- Do not attach the E-Bike adapter if water droplets, dust, or other foreign matter is attached to the unit. Also, do not touch the terminals.
- Never use a high-pressure hose to clean the light.
- This device is rated IPX4 based on JIS C0920. Do not immerse the device in water. Doing so may cause a malfunction. Wipe off any moisture after using the device in rainy weather.
- Do not subject the light to strong vibrations, impacts, or excessive force. Discontinue use if any abnormality occurs.
- Do not charge or use the battery at any voltage or polarity other than that specified. Do not short-circuit the battery.
- Do not drop the light into a fire or heat the light.
- If the light unit or parts become dirty with mud, etc., clean with a soft cloth which is moistened with mild soap. Never apply paint thinner, benzene or alcohol; damage will result.

## GE100 FEATURES

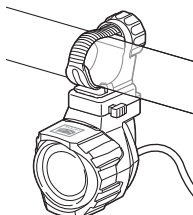
The GE100 headlight connects directly to the E-Bike drive unit for use. The headlight includes a visor to direct the light distribution, allowing the unit to be mounted on the top or bottom of the handlebar. See "2. Mounting the headlight" for how to change the mounting position of the E-Bike adapter. The e-bike light GE100 can also be used as a battery light via the optionally available battery. See "Removing & optional use as battery light" for more information.

## Included Items

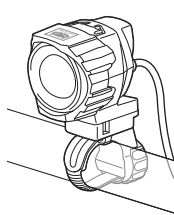


## 1 HOW TO MOUNT TO A BICYCLE

Mounted below



Mounted above

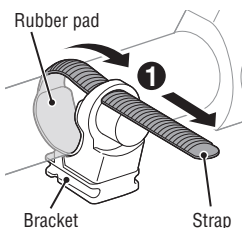


Handlebar diameter:  $\Phi 22 - 35$  mm

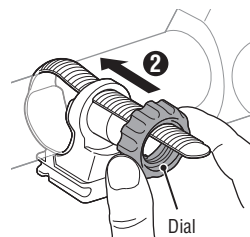
Mounting height : 400 - 1200 mm

### 1. Mounting the bracket

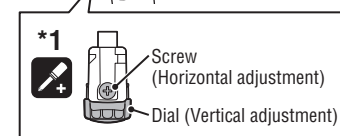
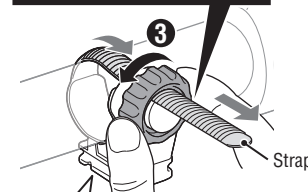
\* This section explains how to mount the light unit below the handlebar.



Wrap the strap around the handlebar.



Attach the dial.



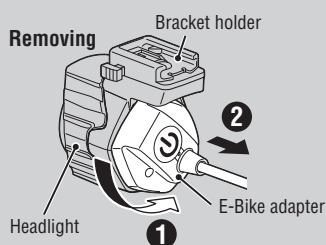
Securely tighten the dial.

#### CAUTION!:

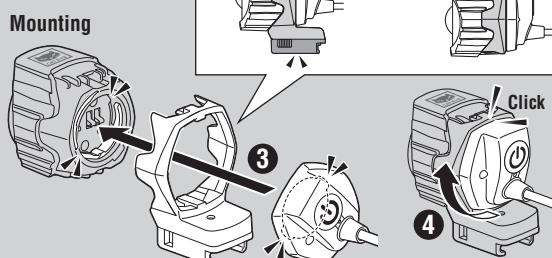
- Be sure to tighten the dial by hand. When you tighten it too hard with a tool, the screw thread may be stripped.
- Check the dial and screw (\*1) on the bracket periodically, and use them without any loosening.
- Round off the cut edge of the bracket strap to prevent injury.

### 2. Mounting the headlight

Always mount the light with the visor facing upwards so that the low beam is correctly aligned.



Turn the E-Bike adapter counterclockwise to separate the adapter from the headlight and the bracket holder.



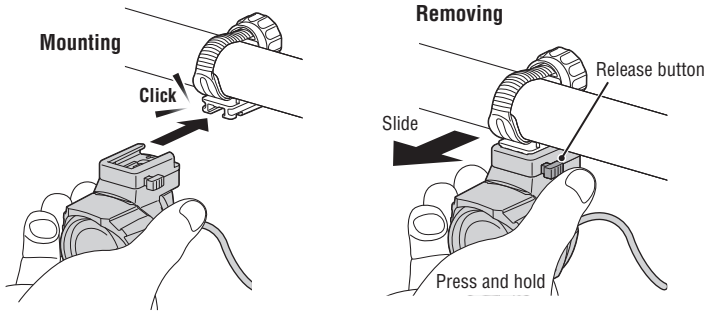
Turn the bracket holder and align the grooves on the E-Bike adapter to the grooves on the headlight, and turn clockwise until the adapter stops.

#### CAUTION!:

- When attaching or removing the E-Bike adapter, be sure to hold the headlight to prevent it from dropping and becoming damaged.
- Do not attach the cartridge battery if water droplets, dust, or other foreign matter is attached to the unit, and do not touch the terminals.
- Never position the visor to the bottom of the headlight. Doing so will dazzle oncoming traffic.

# 1 HOW TO MOUNT TO A BICYCLE (Continue)

## 3. Attaching/removing the light



### Adjusting the lighting angle



NO!

Horizontal

OK

When mounting the light unit, ensure that the light will not dazzle other road users. To adjust the angle, loosen the dial or the screw (\*1) to the point that the bracket moves slightly, make the adjustment, and then tighten the screw to fix the light unit in place.

## 4. Connecting to the drive unit

Connect the relay cable to the E-Bike drive unit, and then connect the E-Bike adapter on the light unit to the relay cable connector.

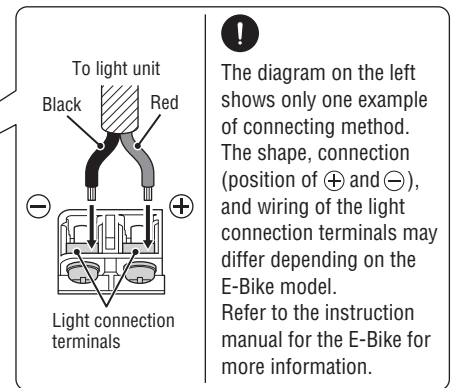
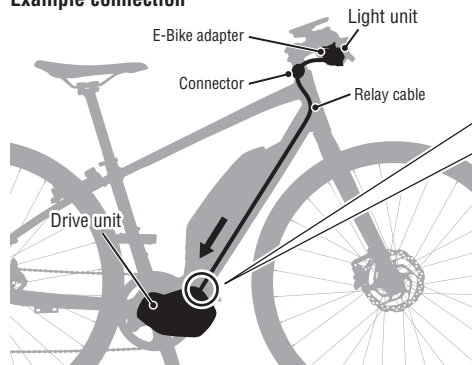
### CAUTION!

Be sure to check "E-Bike output compatibility" before connecting to the drive unit, and be sure to connect to the drive unit correctly.

### E-Bike output compatibility

Input voltage	DC 5.5-14.5 V
Power consumption	6.8 W Nominal power(s)
Cable length	Approx. 160 cm • Light unit : Approx. 15 cm • Relay cable : Approx. 145 cm (Red: Positive / Black: Negative)

### Example connection

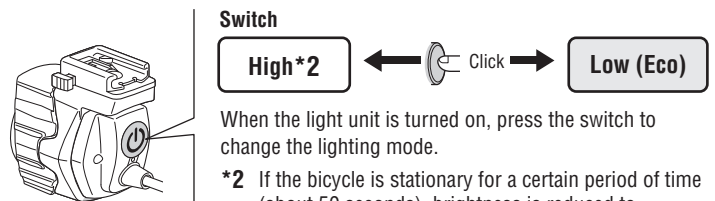


## 2 SWITCH OPERATION

### OFF ↔ ON Controller operation

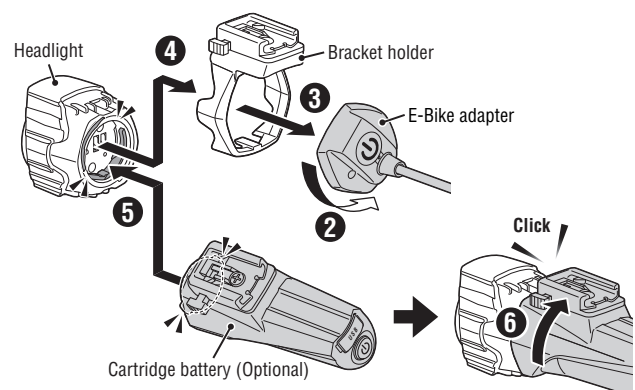
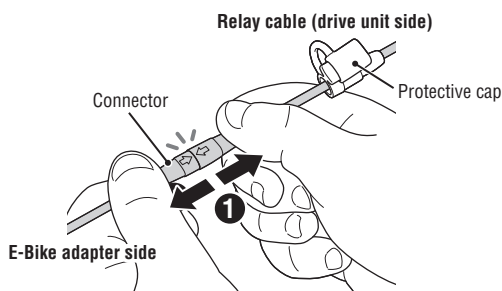
**!** The light unit can be turned on/off using the E-Bike controller. The operation of the controller may differ depending on the E-Bike model. Refer to the instruction manual for the E-Bike for more information.

### Switching the lighting mode



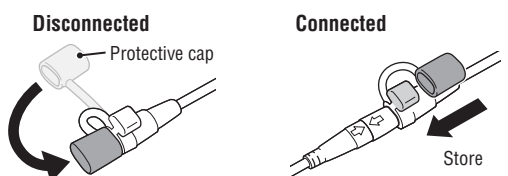
\*2 If the bicycle is stationary for a certain period of time (about 50 seconds), brightness is reduced to conserve the battery.

## Removing & optional use as battery light



### CAUTION!

- After disconnecting the relay cable connector, cover the tip on the drive unit side with the protective cap to prevent water from entering the connector.
- Perform the procedure in reverse to reconnect the E-Bike adapter, making sure the arrows on the cable align when connecting the connector.
- Always store the protective cap carefully for use.



## LEGAL INFORMATION

Only road legal in Germany if installed on bicycles with pedal assist function up to 25 km/h that are also equipped with a battery charge indicator and function to switch off the motor to prevent a deep discharge of the battery to ensure that the lighting function is available when needed.

## SPECIFICATIONS

Light source	High-brightness multi-white LED
Temperature range	14°F – 104°F (-10°C – 40°C)
Waterproof	IPX4
E-Bike output compatibility	
• Input voltage	DC5.5 – 14.5 V
• Power consumption	6.8 W Nominal power(s)
• Cable length	Approx. 160 cm
	Light unit : Approx. 15 cm
	Relay cable : Approx. 145 cm
	(Red: Positive / Black: Negative)
Dimensions/weight	2-9/16" x 2-31/64" x 51/64" (65.0 x 63.0 x 45.5 mm)
	/ 3.5 oz (94.5 g) (Light unit only)

\* The specifications and design are subject to change without notice.

## LIMITED WARRANTY

### 2-year warranty: Light unit only (excludes accessories/attachments)

CatEye products are warranted to be free of defects from materials and workmanship for a period of 2 years from original purchase. If the product fails to work during normal use, CatEye will repair or replace the defect at no charge. Service must be performed by CatEye or an authorized retailer. To return the product, pack it carefully and enclose the warranty certificate (proof of purchase) with instruction for repair. Please write or type your name and address clearly on the warranty certificate. Insurance, handling and transportation charges to CatEye shall be borne by person desiring service.

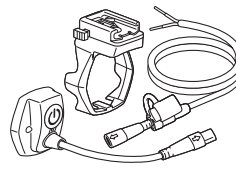
## CATEYE CO., LTD.

2-8-25, KUWAZU, HIGASHI SUMIYOSHI-KU, OSAKA, JAPAN 546-0041  
For inquiries, please visit <https://cateye.com/intl/contact/>

## STANDARD ACCESSORIES

### 5336922

E-Bike adapter  
(Min 5.5V-Max 14.5V)



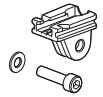
### 5338827N

FlexTight™ bracket  
(H-34N)



### 5445340

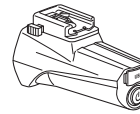
GP bracket



## OPTIONAL ACCESSORIES

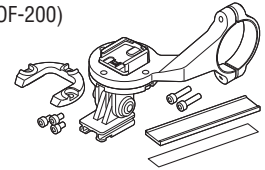
### 5336840

Cartridge battery  
(BA-3.4DS)



### 1604110

Out-front bracket 2  
(OF-200)



### 5336860

Protective cover



### 5342440

Center fork bracket  
(CFB-100)

