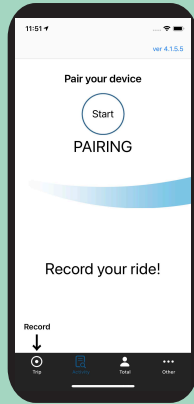




AirGPS QUICK CHART

SETUP

STEP 1



Download Cateye Cycling app.

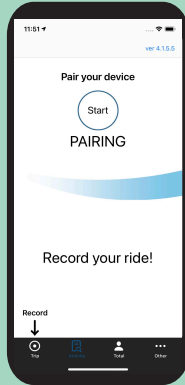


Cateye Cycling



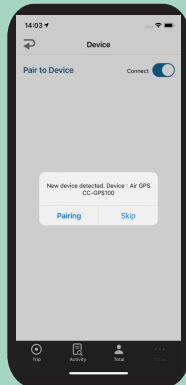
STEP 2

Long Press



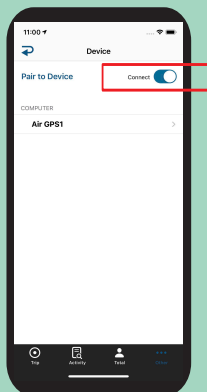
Power on AirGPS.
Open the app and press
[Start] to begin pairing.

STEP 3



After AirGPS is detected,
press [Pairing].

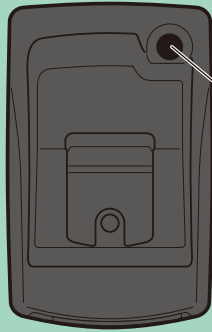
STEP 4



After completion of pairing,
turn [Connect] off.

RECORD YOUR RIDE

STEP 1



Power on.

⏻ Long press

STEP 2



Get GPS signal.



No GPS signal received



GPS signal received

Wait outside for about 1-2 min.

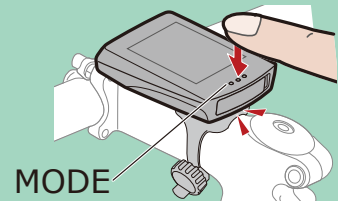
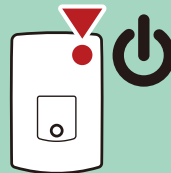


STEP 3



Start recording.

Press POWER or MODE button.



MODE

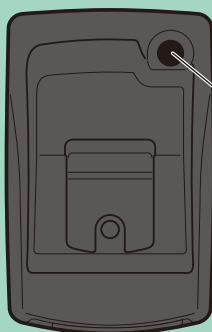


Press MODE:
Changes bottom row data.



Long press MODE:
Pauses/resumes recording.

STEP 4



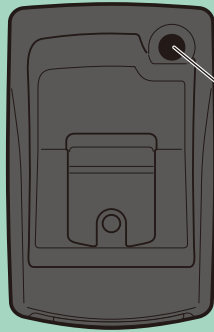
Power off to end recording.

⏻ Long press

Ride data will be automatically saved.

IMPORT RIDE DATA

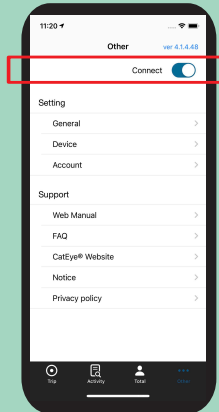
STEP 1



Power on.

 Long press

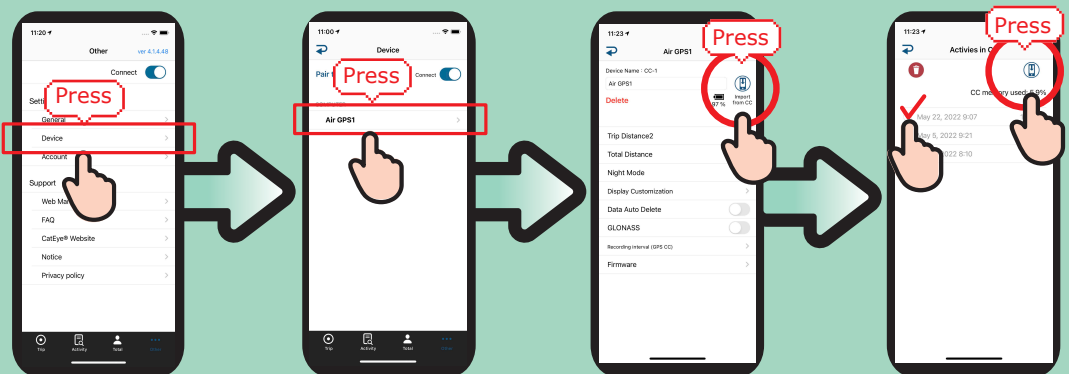
STEP 2



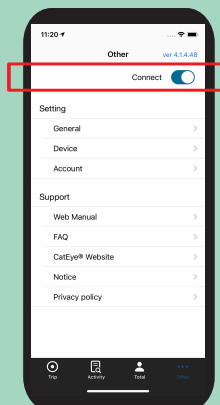
Open Cateye Cycling app and turn [Connect] on.

STEP 3

**Press Device > AirGPS >  .
Select activity you want to import and then press  .**



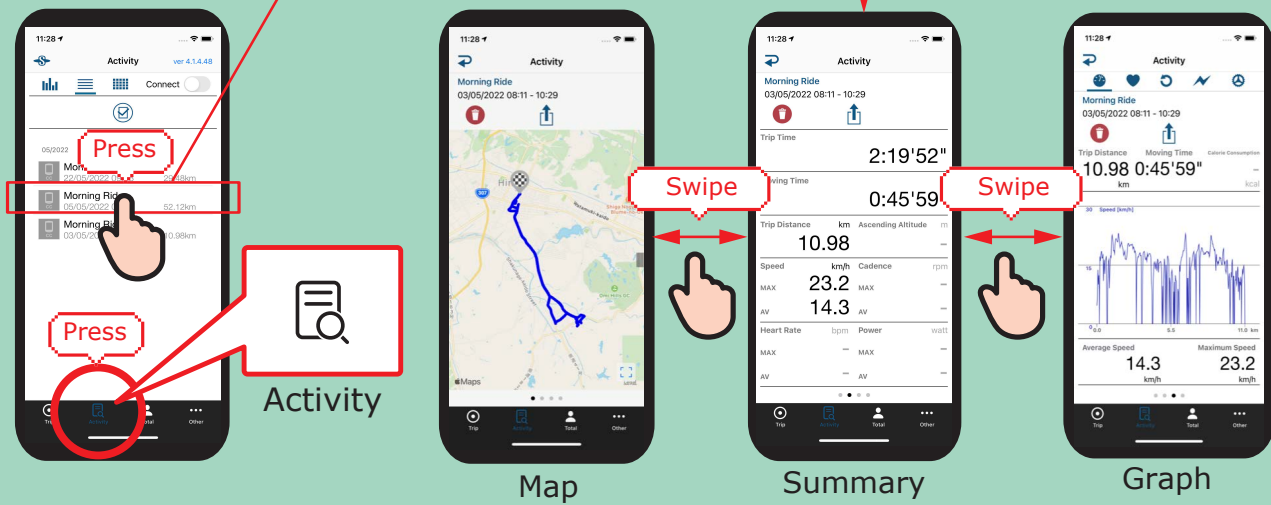
STEP 4




After completion of import, turn [Connect] off.


VIEW RIDE DATA

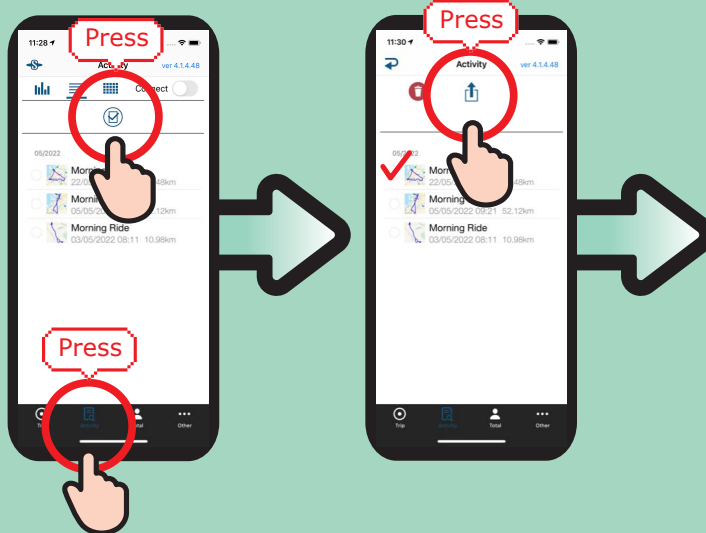
Select activity.



UPLOAD TO WEBSITES

Press Activity and then  .

Select activity you want to upload and press  .



share your adventure.
CATEYE Atlas

STRAVA

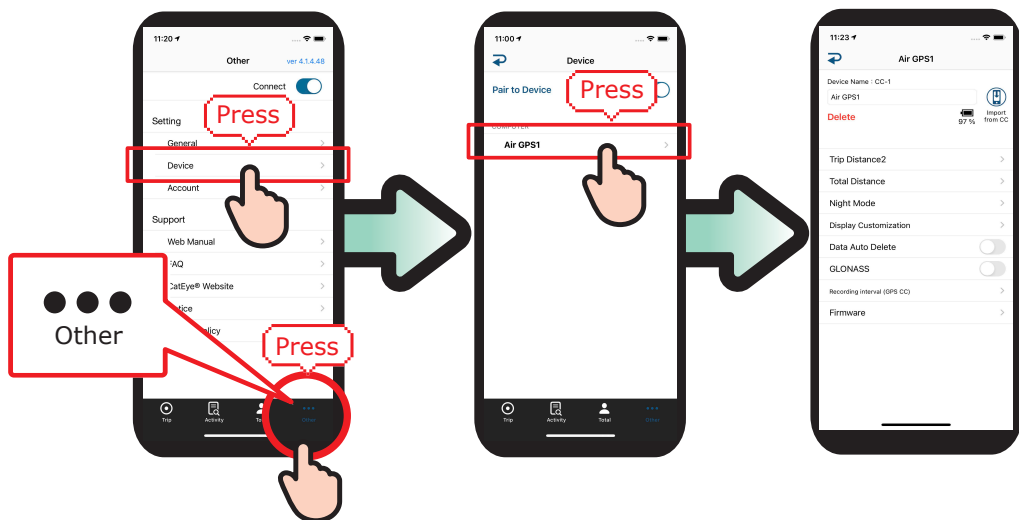
TRAINING PEAKS

CHANGE SETTINGS



- 1) Open Cateye Cycling™ app.
- 2) Press ○○○ Other > Device > AirGPS

Changes will be applied when your AirGPS connects to app.



Settable items

- Display customization
- Backlit (Night mode)
- Data auto delete
- GLONASS
- Sensor selection
- Recording interval
- Distance 2 reset
- Total distance
- Firmware

USE WITH SENSORS



Pair sensors with your AirGPS through app.

Through Cateye Cycling™ app, CATEYE brand sensors can be paired with your AirGPS and tire circumference can be set.



ISC-12



SPD-30



CDC-30



HR-12



OHR-31

Please read the instruction manual for more details.
<https://cateye.com/intl/support/manual/CC-GPS100.html>